
866.332.2403 (Toll Free); 7am-7pm Pacific Time, Monday-Saturday



Assembly instructions for: **THE ALAMEDA BENCHES**



Thank you for purchasing Forever Redwood patio furniture. Forever Redwood is built by Old-Growth Again Restoration Forestry (OGA). OGA is dedicated to restoration forestry. Sales of patio furniture finance our restoration work in California redwood forestlands.

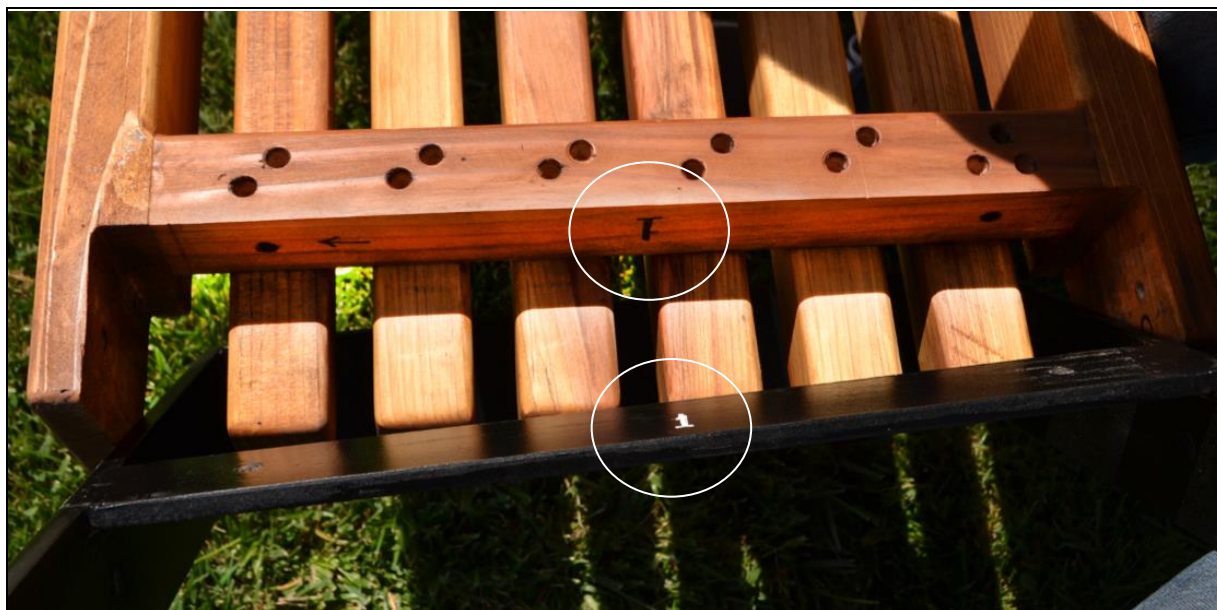
Tools required: ½-inch ratchet and a mallet or small hammer.

Box Content:

Quantity	Description	Image
1	Seat	
2	Legs	
4	Carriage bolts 3 ½" x 5/16", Washers and Nuts	

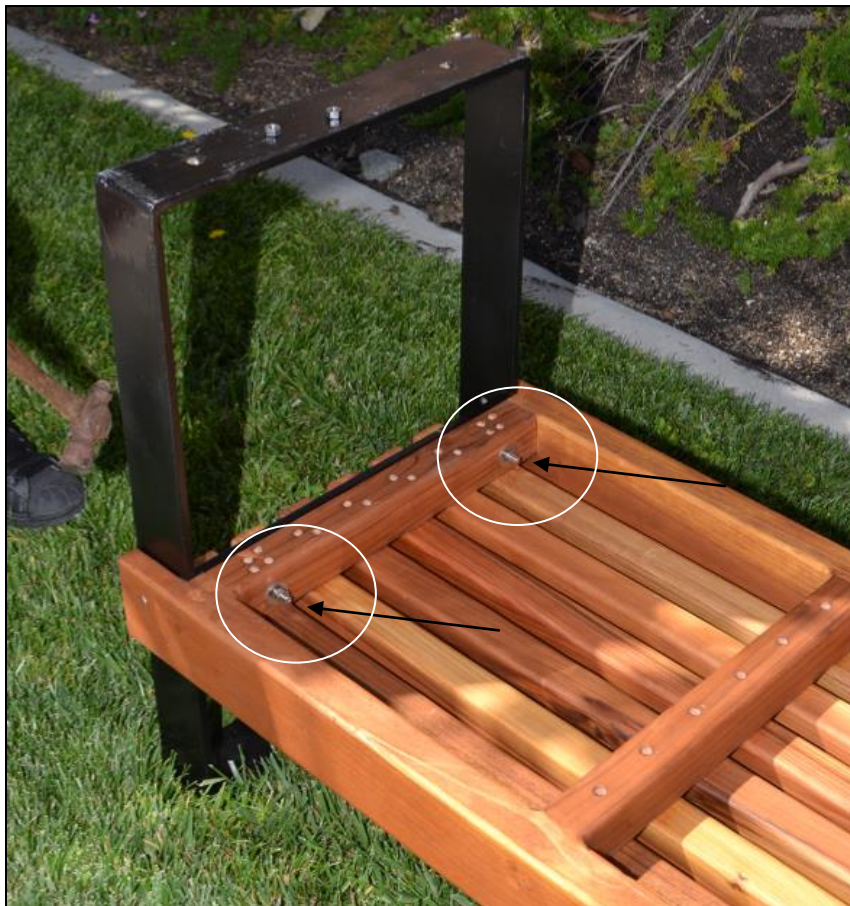
Your bench was partially disassembled into 3 parts and hardware. Unpack your bench and make sure you have all the parts.

Step 1: Turn the seat upside down. You'll notice that each side has a number that corresponds to each leg. Match the leg number to the side hole and attach with two carriage bolts. Align the predrilled holes; lightly tap the 2 bolts in. The bolts should tap into their holes. If you have to force a bolt, the leg is probably not oriented properly, is in the wrong hole or it is turned around. Make sure the bolts are tapped all the way into the wood, then add washers and nuts and tighten with a ½-inch ratchet.





Step 2: Repeat step 1 for the other leg.



Thank you. If you have any questions, please call or email us.