

See your interactive 3D version of the above drawing at the link below:

[Click here to see the 3D Model](#)

Time & Materials Study for Monitor Barn

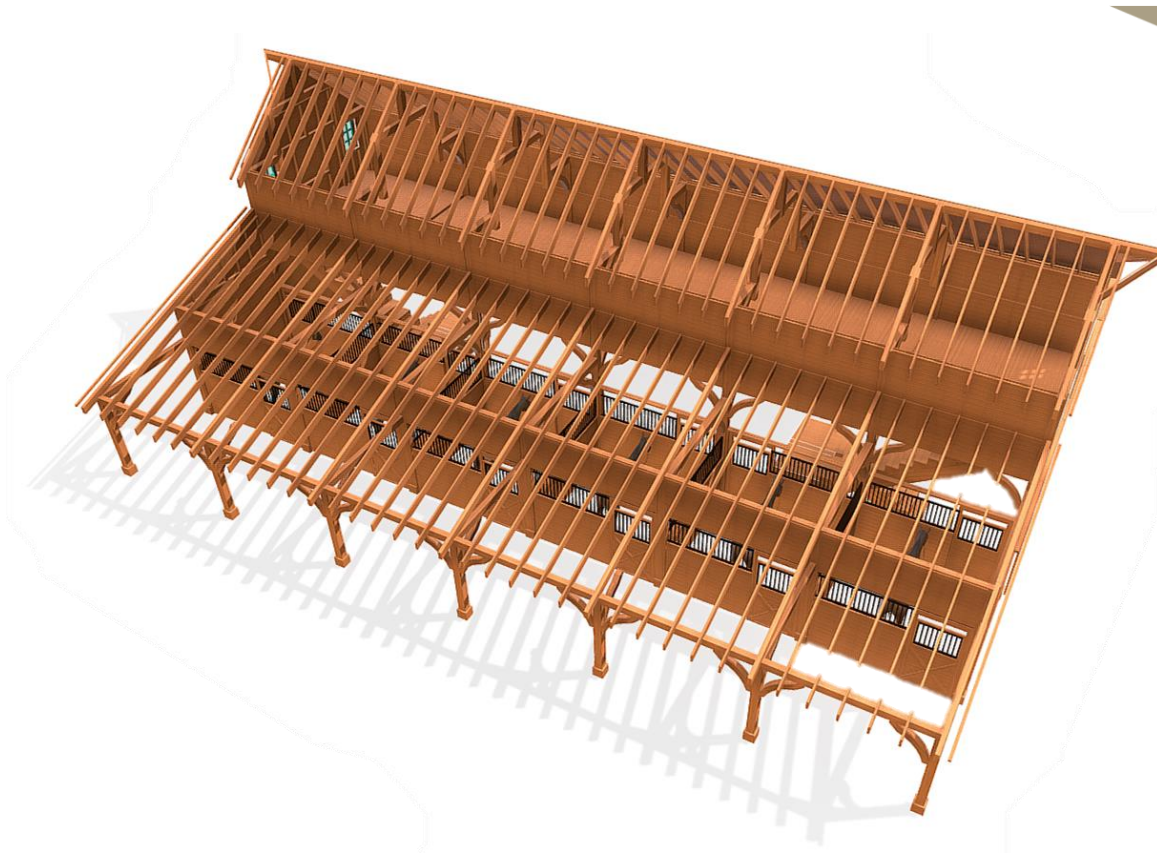
Custom Monitor Barn & Deck
Size: 74 ft L x 63 ft W

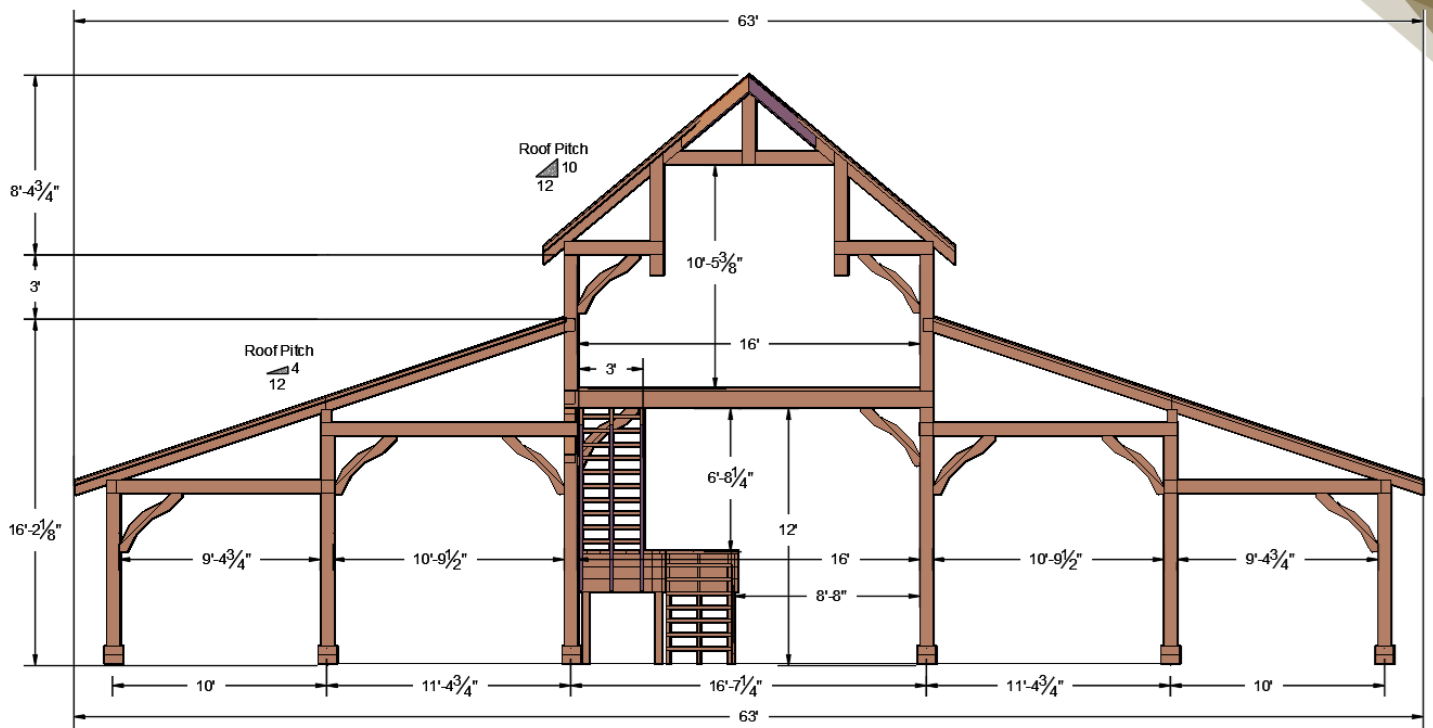
Time and Material Analyst:

Mr. Ricardo Bautista
rbautista@foreverredwood.com
Civil Engineer, Department Head
Phone Office: 619 376 2099
Phone no. 707-640-2905, Ext. 5

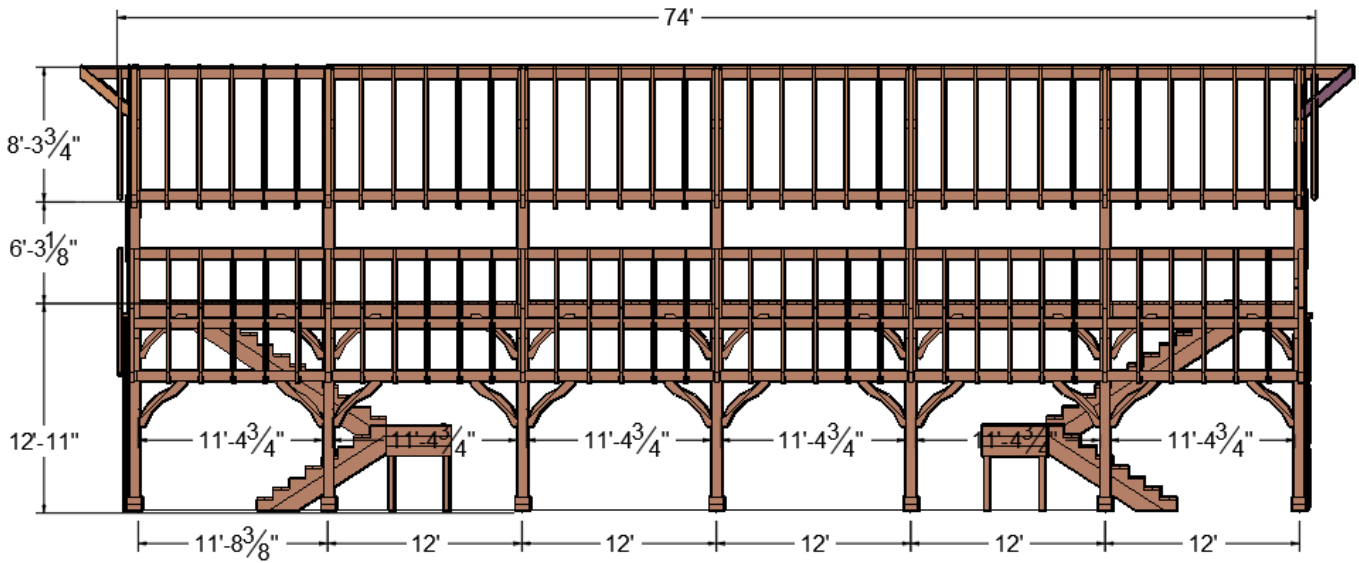
From the Forest, For the Forest.





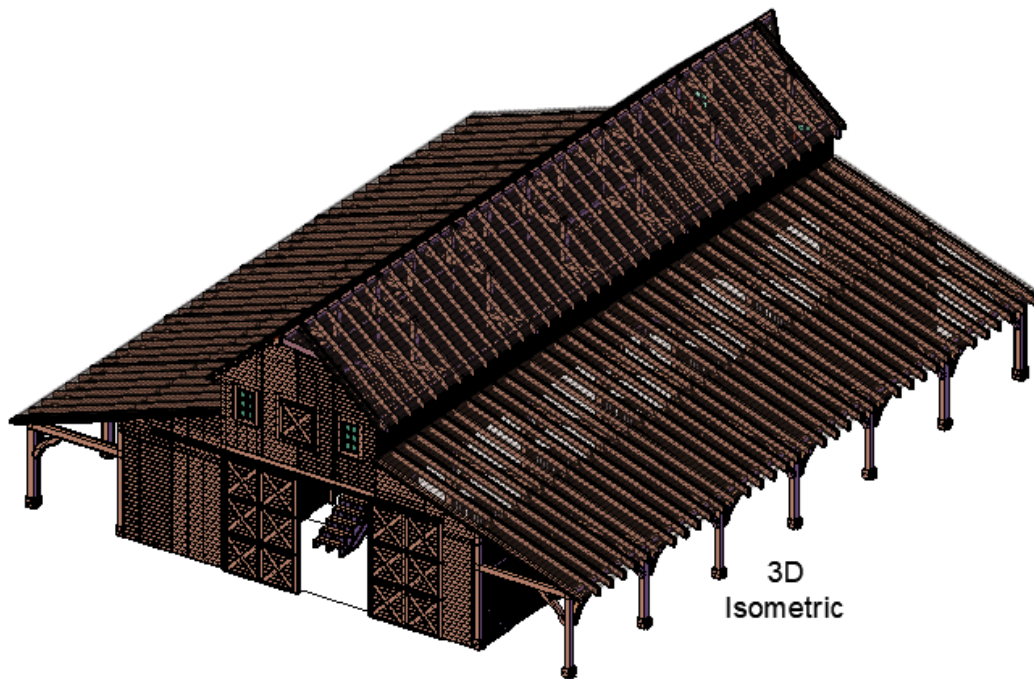
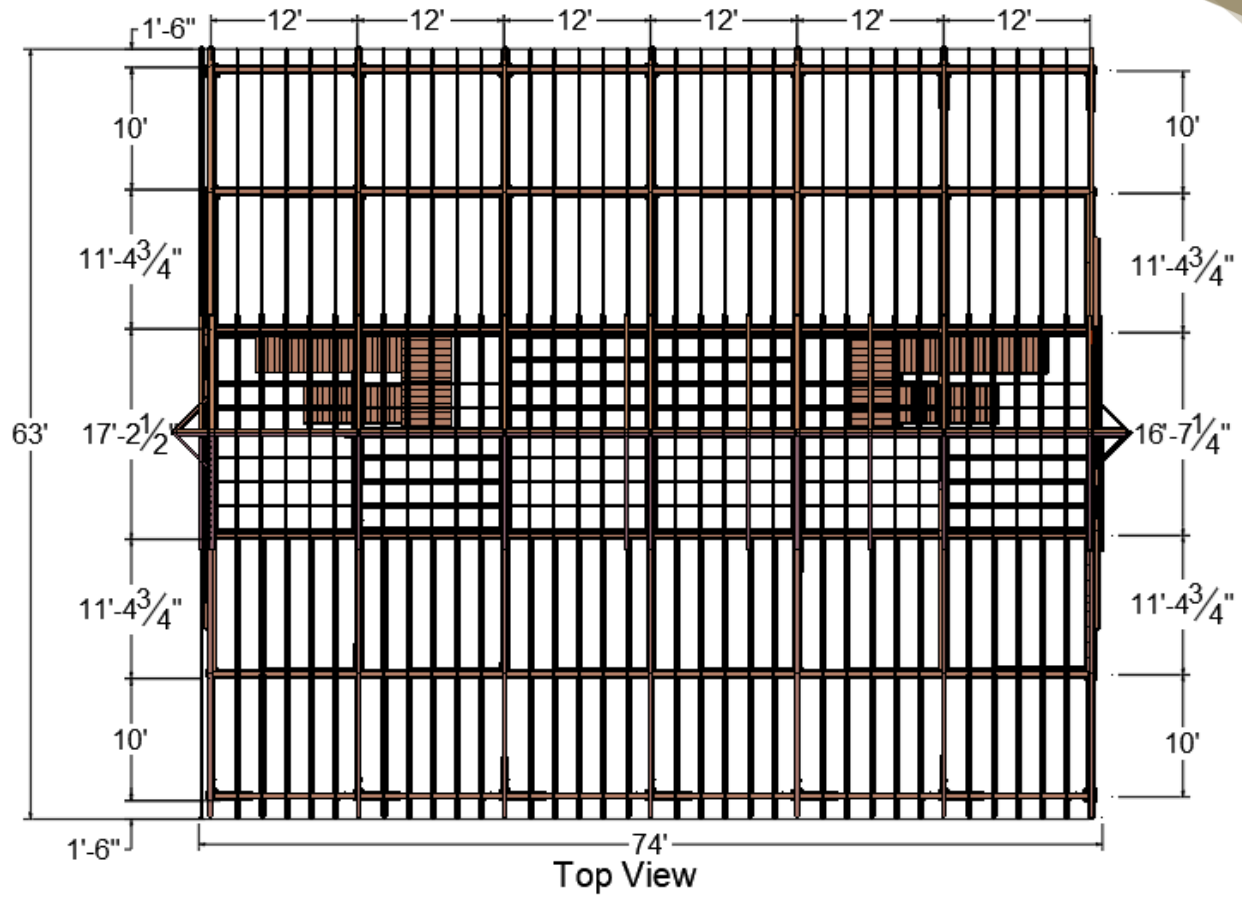


Front View



Lateral View





Description: 8x8 Posts, 6x8 and 8x8 Supports, 6x8 Truss, 2x8 Rafters @ 24", 6x10 ridge beam, 1x8 T&G

A) Custom Pavilion - Size: 74 ft L x 63 ft W. Roof Pitch 4:12 and 10:12

Qty	Commercial size (inches)		L (feet)	BF	Item	
	W	H				
14	8	8	12	896.00	Post	Frame
14	8	8	20	1493.33	Post	
14	8	8	8	597.33	Post	
14	8	8	12	896.00	Support W1	
14	6	8	11	616.00	Support W1	
16	6	8	13	832.00	Support L1	
32	6	8	12	1536.00	Support L1	
4	8	8	13	277.33	Support L2	
8	8	8	12	512.00	Support L2	
7	6	10	18	630.00	Support W2	
48	6	6	4	576.00	Knee brace L	
58	6	6	4	696.00	Knee braces W	
60	2	8	13	1040.00	Rafters 1	
60	2	8	12	960.00	Rafters 2	
60	2	8	13	1040.00	Rafters 2	
2	6	10	16	160.00	Ridge Beam	
4	6	10	12	240.00	Ridge Beam	
14	8	8	5	373.33	Hammer support	
7	4	8	8	149.33	Collar tie 1	
7	2	8	8	74.67	Collar tie 2	
14	4	8	13	485.33	Top Chord	
14	8	8	6	448.00	Queen post	
7	8	8	4	149.33	King Post	
240	1	8	13	2080.00	T&G 1	Roof
512	1	8	12	4096.00	T&G 2	
20	1	8	16	213.33	T&G 2	
8	2	3	13	52.00	Fascia trim	
4	2	3	12	24.00	Fascia trim	
1	x	TOTAL		21143.33	BF	



Description: 2x4 stud walls, 1x6 siding T&G

B) Lateral walls, inside wall and doors for Custom Pavilion - Size: 74 ft L x 63 ft W

Qty	Commercial size (inches)		L (feet)	BF	Item
	W	H			
40	2	4	6	160.00	Mid-wall frame V
80	2	4	6	320.00	Mid-wall frame H
480	1	6	6	1440.00	Mid wall T&G
48	2	4	8	256.00	Mid wall 2 frame V
120	2	4	5	400.00	Mid wall 2 frame H
576	1	6	8	2304.00	Mid wall 2T&G
288	1	6	4	576.00	Door mid-sliding
120	2	3	4	240.00	Door mid-sliding
48	2	4	4	128.00	Door mid-sliding
48	2	6	8	384.00	Door mid-sliding
24	2	6	12	288.00	Door mid-sliding
32	2	4	12	256.00	Top Front-Back wall 1
16	2	4	6	64.00	Top Front-Back wall 1
416	1	6	6	1248.00	Front-Back wall siding T&G 1
16	2	4	6	64.00	Top Front-Back wall 2
24	2	4	4	64.00	Top Front-Back wall 2
64	1	6	6	192.00	Top Front-Back wall siding T&G 1
36	2	4	7	168.00	Top Front-Back wall 3
36	2	4	4	96.00	Top Front-Back wall 3
208	2	4	6	832.00	Front-Back wall siding T&G 2
144	2	4	6	576.00	Lateral top wall 1 H
360	2	4	3	720.00	Lateral top wall 1 V
1152	1	6	6	3456.00	Lateral top wall siding T&G 1*
16	2	4	12	128.00	Front Door
24	2	3	8	96.00	Front Door
288	2	3	8	1152.00	Front Door, siding T&G
8	2	6	8	64.00	Frame Front Door
1	x	TOTAL	15672.00	BF	

Stud walls, doors and frame siding



Description: Deck and Stairs						
C) Deck frame, deck boards, supports, stair and support stairs						
Qty	Commercial size (inches)		L (feet)	BF	Item	
	W	H				
4	2	10	18	120.00	Support Frame Deck 1	Deck
18	2	10	12	360.00	Deck Joist	
40	2	8	18	960.00	Deck Boards 1	
4	2	10	18	120.00	Support Frame deck 2	
22	2	10	12	440.00	Deck Joist	
42	2	8	13	728.00	Deck Boards 2	
18	2	8	18	432.00	Deck Boards 2	
12	2	12	16	384.00	Stair frame	Stairs
12	2	12	10	240.00	Stair frame	
40	2	8	3	160.00	Stair steps	
40	2	6	3	120.00	Stair steps	
48	2	8	4	256.00	Base	
28	2	8	4	149.33	Base	
12	4	4	6	96.00	Post base	
1	x	TOTAL		4565.33	BF	

*Not for construction, may change during the design phase, metal brackets, and connections will be defined in the Design Phase, High Wind anchors quoted in this project



For more information about the anchors:

https://www.foreverredwood.com/media/pdf/assembly/Ways_to_attach_your_pergola_posts_to_the_ground.pdf

