






866.332.2403 (Toll Free); 7am-7pm Pacific Time, Monday-Saturday

Assembly instructions for: **NOAH'S ARC HAMMOCKS**

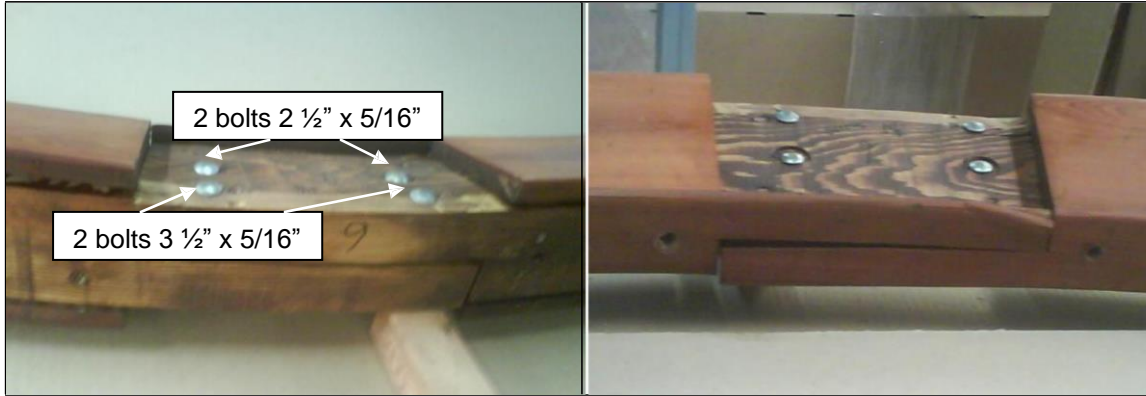


Quantity	Description	Drawing
2	Carriage Bolts 3 1/2" x 5/16", Washers and Nuts	
2	Carriage Bolts 2 1/2" x 5/16", Washers and Nuts	
4	Carriage Bolts 9" x 3/8", Washers and Nuts	
4	Carriage Bolts 8" x 3/8", Washers and Nuts	
4	Carriage Bolts 6" x 3/8", Washers and Nuts	
8	Deck screws 2"x 6"	
2	Arcs (A, B)	
2	Joint covers (C, D)	
2	Legs (E, F)	
1	Joint Connector (G)	
2	Leg supports (H,I)	

ASSEMBLY INSTRUCTIONS

The parts that go together have the same numbers written next to the predrilled holes they attach to. Align the parts with the numbers as shown for ease of reference.

- 1** Attach part A (arc) to part B (arc), with four bolts, washers & nuts (into four holes marked "1"). Tap the bolt all the way into the wood to set it. Then add a washer and nut and lightly tighten.



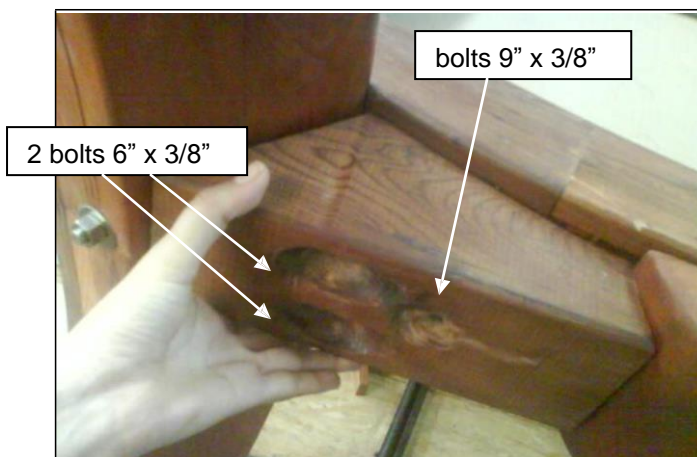
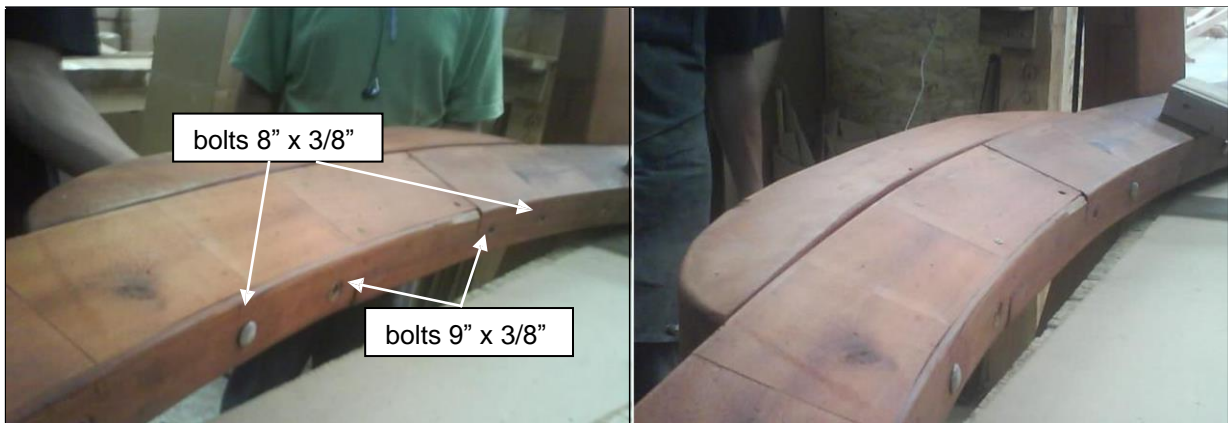
- 2** Attach part C (joint cover) to part A (arc), with four deck screws (2\" x 6\"), washers & nuts (into four holes marked "2"). Repeat in the other side.



3 Attach part E (leg) to part A (arc), with bolt (9" x 3/8"), washer & nut (into hole marched "4"). Tap the bolt all the way into the wood to set it. Then add a washer and nut and lightly tighten. Repeat the other size.



4 Attach part G (joint Connector) to part A & B (arcs), with four bolts, washers & nuts (into four holes marched "6"). Tap the bolt all the way into the wood to set it. Then add a washer and nut and lightly tighten.



5 Attach part H (leg support) to part A & E (arc & leg), with three bolts, washers & nuts (into three holes marched "7"). Tap the bolt all the way into the wood to set it. Then add a washer and nut and lightly tighten. Repeat the other size.

6 shows the fully assembled Noah's Hammock stand. Enjoy! Thank you. If you have any questions, please call or email us.

