



# FOREVER REDWOOD

*From the Forest, For the Forest since 1995*

---

866.332.2403 (TOLL FREE); 7am – 7pm Pacific Time, Monday-Saturday

## DON'S HEXAGONAL GAZEBO KIT



# CONTENT

I. DESCRIPTION .....	2
II. SPECIFICATIONS .....	3
A. Dimensions & Drawings .....	3
B. Windows.....	5
C. Roof.....	5
D. Walls.....	5
E. Gazebo Flooring .....	5
F. Gazebo Roof Type.....	7
G. Gazebo Siding Height .....	8
H. Gazebo Door Style .....	9
I. Finish Options .....	10
III. ASSEMBLY & CARE.....	13
IV. MATERIALS .....	14
V. WARRANTY .....	15
VI. SHIPPING .....	15

## I. DESCRIPTION

**The Don made a design we couldn't refuse. The two-tiered design of Don's Hexagonal Gazebo with curved corner windows creates maximum visibility and exceptional interior lighting.**

With Don's Redwood Hexagon Garden Gazebo, you can literally add space to your home without long-term remodeling or planning. Simply send us your specifications and needs, and we'll send you a Hexagonal Gazebo kit right to your door. You can use the Gazebo as a quiet space, family hang out area, or even put a Jacuzzi in there, depending on the size of your kit. Like all of our products, this Redwood Gazebo kit is built exclusively through restoration forestry.

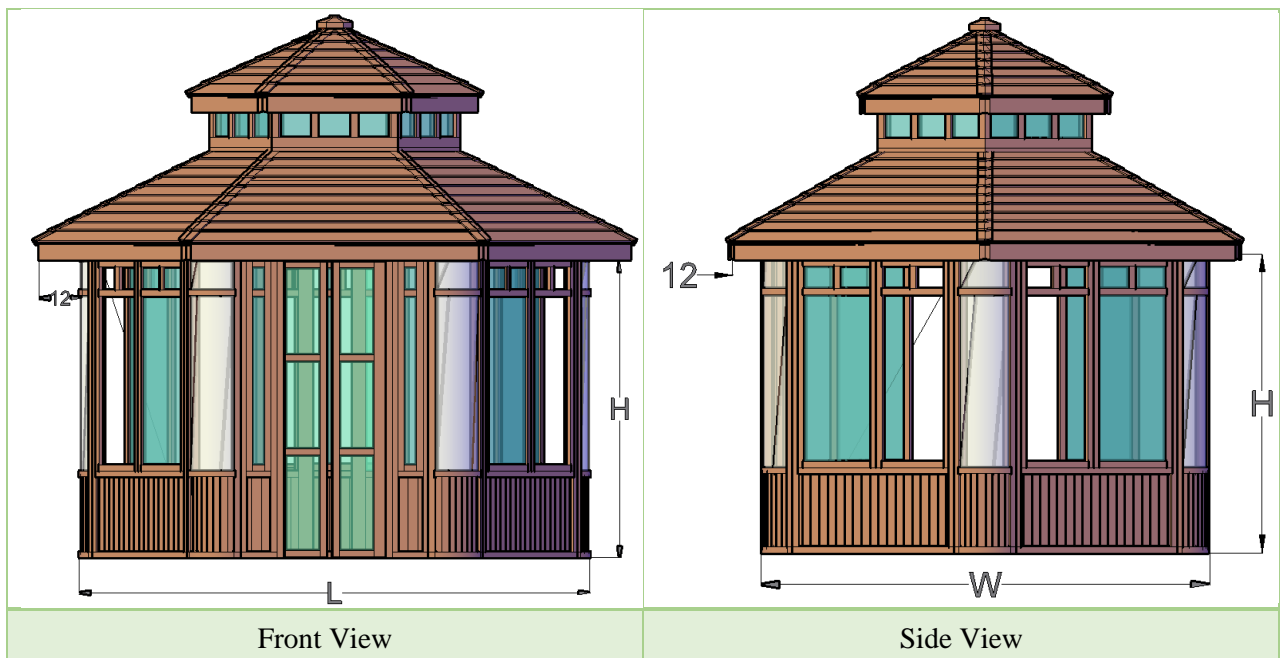
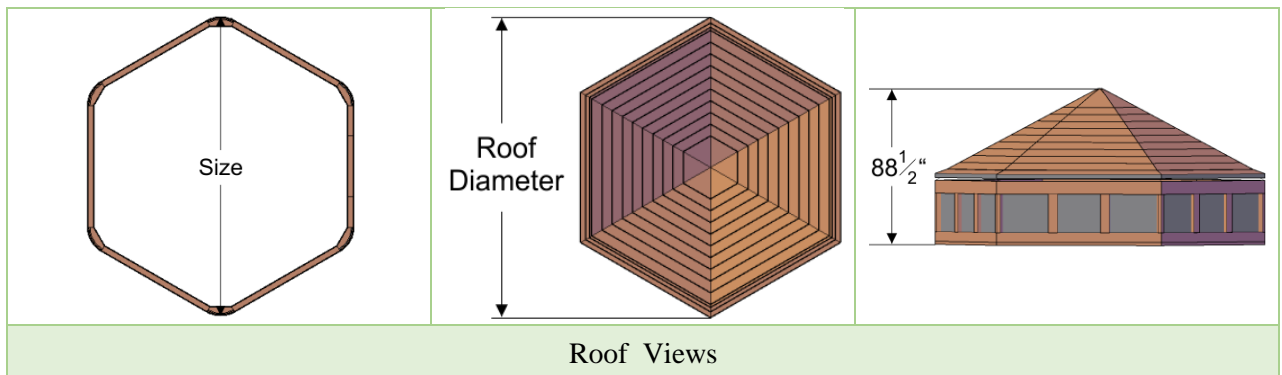
- Don's Hexagonal Gazebo kit can be made in any diameter up to 16' and any detail can be added or adjusted to make it your very own. You do not have to listen to the Don anymore than you want to!
- The Don is a well-designed Gazebo that accomplishes both great visibility with privacy and excellent ventilation also. The clerestory windows on the second story and the first story windows can come with or without sliders and screens for additional ventilation for the hot months. It is a flexible design where you can place the door anywhere you like and add a second door also if that works best for you.
- **Forever Redwood is a forest restoration company.** We manage forestlands very conservatively. The limited amount of lumber harvested from our lands is hand selected for each job carefully. We use oversized timbers and the best hardware (stainless steel) and sealants (Sickens brand only) so that we can comfortably give decay warranties of up to 30 years. None of our competitors can do this. Redwood lasts longer than teak or cedar or any of the woods ripped out of the Amazon.
- Besides the standard options of Size, Length, Wood Flooring, Windows (sliders or fixed or a combination), door styles and skylight sizes, we encourage you to get creative with your baby. If you do not see an option or size you would like, speak up!
- **Detailed Drawings are emailed within 5 business days.** You can change any detail or dimension to ensure your Gazebo kit will work perfectly for you.
- Once you approve your drawings, we will fully assemble your creation in the shop for easy re-assembly. No drilling, sanding or cutting needed. Ships in finished panels that bolt together. And, if you do not want to deal with putting it up, [let us know](#) and we will arrange the installation for you anywhere in the Continental U.S.
- **Call or email anytime.** We have been building long-lasting, finely finished [wood gazebo kits](#) since the 90's. A five minute call is all you really need to get started. Then just review the drawings and fine tune them until your perfect Gazebo materializes.

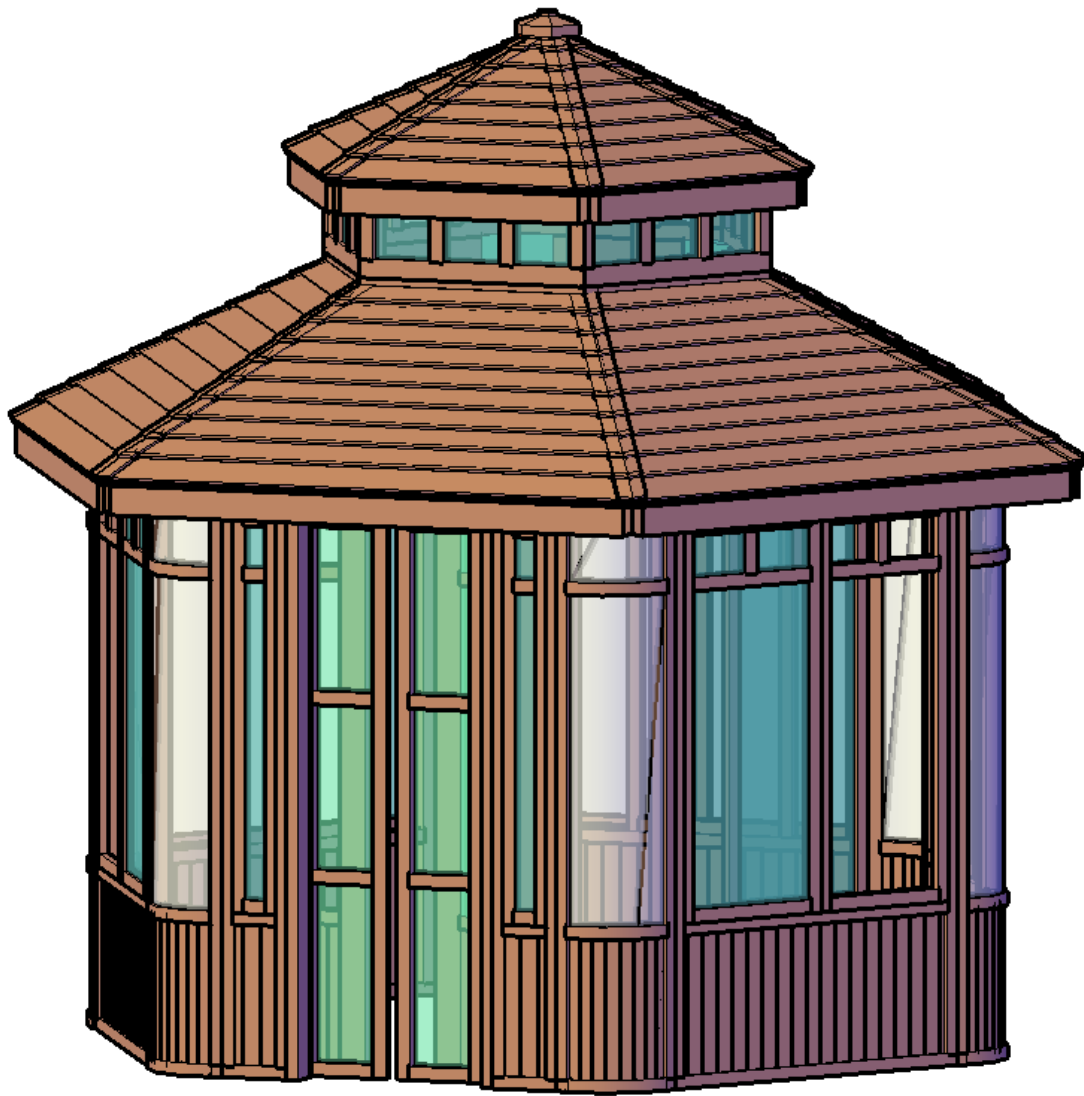
Your new Hexagonal Gazebo kit is built to withstand all of the elements, and will not bend, rot, or weaken from weather. We build all of our kits to last a lifetime, and guarantee their durability for 10, 20, and even 30 years, depending on your order. [Contact us](#) today about shipping and assembly options. Orders typically ship within three days of receiving your customized specifications.

## II. SPECIFICATIONS

### A. Dimensions & Drawings

We can customize our gazebos to suit your needs. Just tell us what size and what options you want. Prior to building any Gazebo, we provide our customers with a detailed drawing based on their proposed features. This lets you review any choices made and make any needed adjustments before it is built. Drawings are a great way to make certain all details have been considered and that your Gazebo will be exactly what you dreamed of.





Isometric View

### Dimensions Common to All.

Dimensions	Roof Diameter	Roof Height at Outside Edge	Approx. Weight
10-Foot	121"	88 1/2"	1290 lbs.
12-Foot	145"	88 1/2"	1520 lbs.
14-Foot	169"	88 1/2"	1900 lbs.

## B. Windows

Don's Hexagonal Gazebo features fixed curved acrylic windows on each corner for a complete 360-degree view. All other windows are sliding panels with screens. Windows are acrylic that will not fade. You have the choice of semi-transparent tinted bronze acrylic allowing visibility while adding privacy and blocking the sun, solid white, or clear.

**Clerestory windows** include four fixed and two sliding windows with screens, and also come in your choice of bronze, white or clear acrylic.

## C. Roof

The cupola roof makes your gazebo more spacious and the clerestory windows all around add beautiful lighting. Standard roof overhang is six inches, and is made of 1 x 6 redwood boards. If you want to order shingles (extra charge), ours are 3/8-inch thick, hand-cut redwood that are four to six inches wide. You will receive 1000 to 3000 single shingles depending on the size of your gazebo (shingles cannot ship attached to roof panels and must be installed individually). We will not charge any extra shipping when you order the shingles for your gazebo.

## D. Walls

Standard walls are 24 inches from the ground to the bottom of the window, with vertical redwood boards. You can choose to have the height of your walls be 30 inches or 36 inches instead. Total height of walls is 7 feet.

## E. Gazebo Flooring

You can order your Gazebo with a Tongue & Groove Douglas-fir flooring. The Gazebos are usually placed on a concrete pad or a wood deck. Photo below shows the Gazebo without flooring on the lawn for maximum contrast. We recommend placing your Gazebo on a wood deck, concrete slab or a stone or tile or brick patio to elevate the walls off the ground for more year round use.





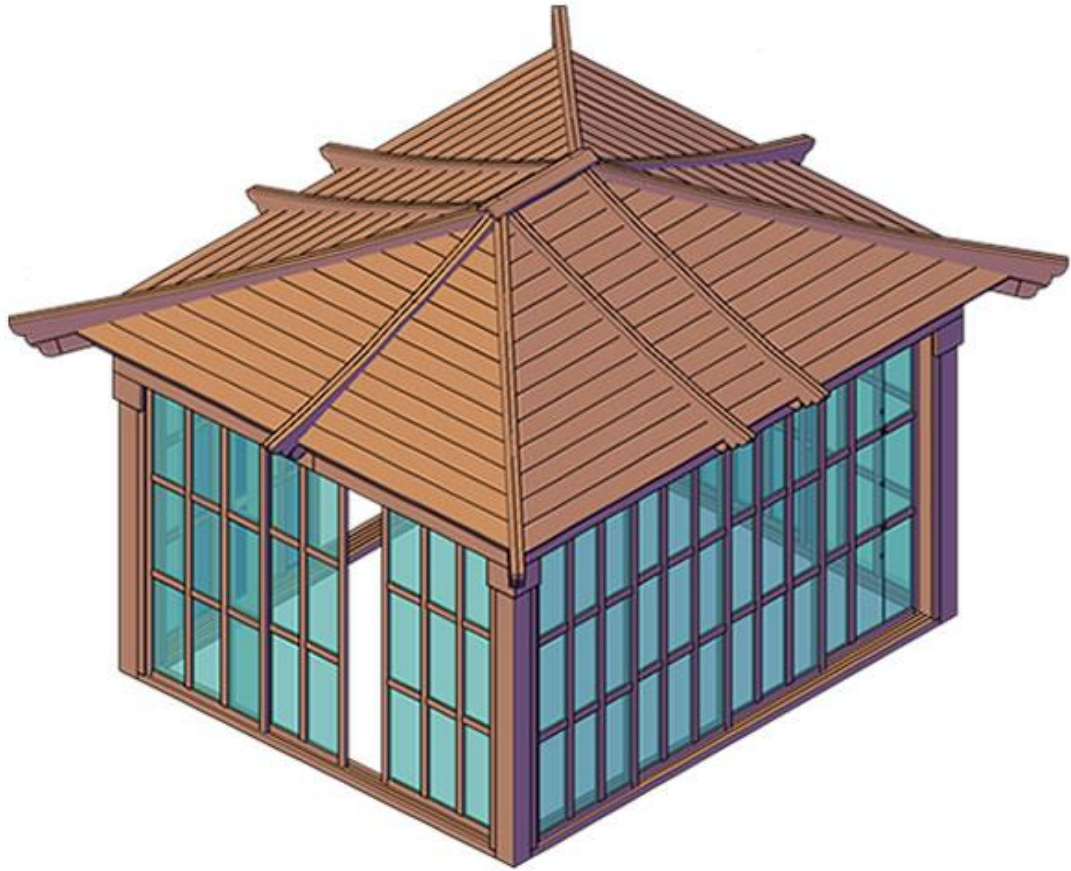
Complete Floor



No Flooring

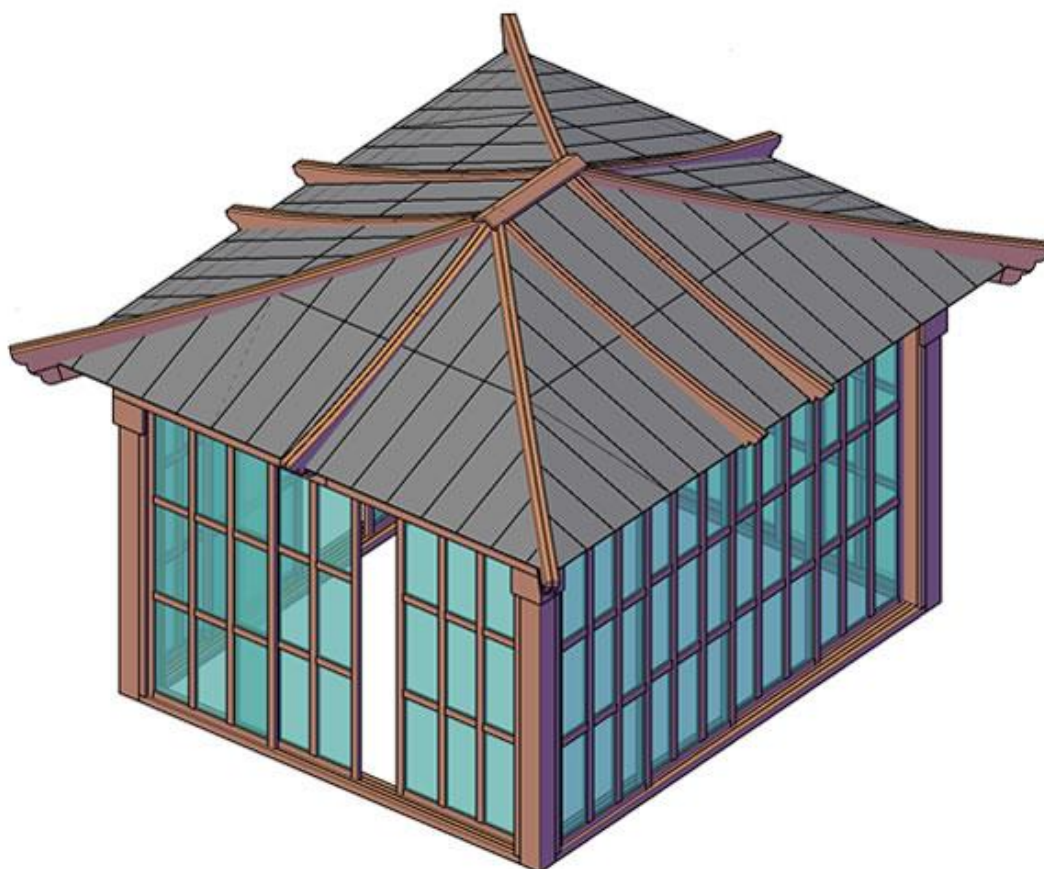
Douglas-fir tongue and groove flooring is an extra charge as shown in the price list. But if you order flooring with your gazebo, it is added without any additional shipping charge.

## F. Gazebo Roof Type



Standard Wood Roof

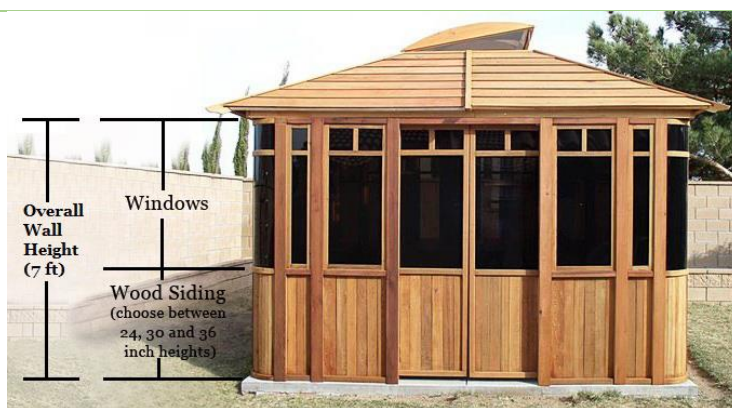




Metal Roof

## G. Gazebo Siding Height

Gazebo walls are a standard 7' tall. Below the windows we offer wood siding in 3 different height options. The height of the siding sets the height of the windows above it. For maximum window visibility, set your siding height at 24". For greater privacy, set your siding height to 30" or 36".



The picture shows the measures relevant to each area.

## H. Gazebo Door Style

Doors are centered on the wall. The standard 360 Gazebo has double sliding Japanese doors with sliding screens. You can also choose French doors, on hinges opening outward, without screens (no extra charge). And you can have one, two, three or four sets of doors in place of the windows (one per wall instead of windows at no extra charge).



French Doors (both open out)



Japanese Doors (2 doors, each slides into wall)



## I. Finish Options

All our furniture ships finely sanded to 220 grit for a smooth to the touch finish.

The most popular finish is our Transparent Premium Sealant. This sealant leaves your furniture looking natural and helps keep the beautiful wood surface colors from fading for several years. We use Sikkens brand finishes because they are the best finishes on the market. For more information about our finishes and how to keep your furniture looking great year after year, please go to: [Care & Finish.](#)

### Unfinished (fine sanding only):



If you are applying your own stain or want the surface color to fade to a "weathered look" in a few months. We do not recommend you leave your furniture unfinished outdoors for any extended period regardless of wood quality. Outdoor weather changes constantly and it is best to at least seal the wood to protect it from consistently absorbing and losing moisture.

### Transparent Premium Sealant - Recommended for Outdoors:

Below are the 5 grades of wood we offer with the Transparent Premium Sealant applied. The color tones shown are close representations of the color your furniture will look like. There is no extra charge for the Transparent Premium Sealant:

				
Douglas Fir (10 yr. Warranty)	Mosaic Eco-Wood (10 yr. Warranty)	Redwood (15 yr. Warranty)	Mature Redwood (20 yr. Warranty)	Old Growth Redwood (30 yr. Warranty)

We also offer the Transparent Premium Sealant with the following stains. There is a small charge for adding these stains because it increases the total amount of coats to 4 with the sealant as the final coats:

				
Transparent	Cherry Stain	Coffee Stain	Black Premium Stain	White Wash





Here is how the Coffee Stain looks like on Redwood



Here is how the Cherry Stain looks like on Redwood



Here is how the Black Premium Stain looks like on Redwood



Here is how the White Wash looks like on Redwood

## Tiger Stripe Effect

Douglas-Fir when stained dark creates a "tiger stripe" effect as shown in this photo. It is beautiful and most customers love it. If you are looking for a dark consistent stain and do not want to see a "tiger stripe effect", please go with any of the Redwood grades for a more consistent stain finish.





### Primers

- **Off-White Oil-Based Primer:** If you are painting a light color. We apply two coats so that it is ready for one final coat.
- **Gray Oil-Based Primer:** If you are painting a darker color. We apply two coats so that it is ready for the final coat.

## III. ASSEMBLY & CARE

Assembly Instructions for: [Don's Hexagonal Gazebo Kit](#)

### All You Need is a Few Tools and a Friend.

Assembly is best done by two people and usually takes about half a day to a day, depending on size. Pergolas need a ratchet wrench, a hammer and a ladder to put them together. In some cases, you might need a drill to attach the posts into concrete. As with all our products, we preassemble pergolas in our shop to ensure everything fits together. All hardware is included and all parts are clearly labeled before it is shipped. We also include detailed step-by-step instructions.

Take a look at our assembly instructions below for specific details. If you plan to pour concrete to hold the posts, the project will require an additional half day prior to assembly. Please do the concrete pour a few days prior to assembly to allow the concrete to cure.

## Installation Help.

Special talent is not required to re-assemble our pergolas. But, if you would like help, [just let us know](#). We have our own team for installations in California, Nevada and Southern Arizona and a network of local contractors we recommend for farther afield.

**Care:** Your Forever Redwood Furniture will last for decades in year-round weather without maintenance.

Depending on the wood grade you choose, even with harsh year-round outdoor conditions, you can expect your furniture to last from ten to forty years without maintenance of any kind.

Being outside year-round is rough on any woods finish. The surface absorbs UV rays, pollution, constant variations in moisture and temperature and it also oxidizes. This is why most wood just doesn't hold up and the surface color slowly changes towards a silver patina over the years. But, with Forever Redwood, you don't have to worry. The silver patina is surface deep only (less than 1/64") and is not indicative of decay. Your set will last decades and is not compromised in any way by the surface color change. For example, we keep our display items as is without refinishing to show off this natural aging (we like the patina!).

Although Forever Redwood is maintenance-free, we recommended you take a few minutes as needed to clean by either hosing down and/or brushing/dusting away accumulated debris (no soap or chemicals needed). If you'd like to keep your set looking its best for decades, please go to: [Care and Finish](#).

## IV. MATERIALS

The secret to outdoor longevity begins and ends with the wood. We use generous amounts of the most decay resistant wood available. We encourage our customers to compare photos of our items side by side with any competing product. Thickness counts. Furniture that is thin and light simply won't last in the year round weather.

To keep your furniture beautiful, we use only stainless steel hardware and the highest quality stains and sealants. We use only the Sickens brand of sealants.

Our primary customer has always been the homeowner that appreciates spending a bit more for quality that will last decades.

Our products are installed with organizations that appreciate longevity like the U.S. Forest Service, U.S. military installations, State and City parks, golf clubs and hotels.

We are favored by many landscape architects and contractors because they can count on exceptional quality and quick personal service to complete projects.

We build each item by hand. This insures your set is finely finished and carefully inspected. Old-fashioned hand building also allows us to adjust the size or design of any item to fit your needs.

Because we are a forestry company, we can offer 5 exceptional wood grades to choose from our carefully managed forests with warranties of up to 30 years against decay in any weather. [Click for more about our 5 wood grades.](#)

## V. WARRANTY

Wood decay is warrantied up to 30 years depending on the wood grade. No other outdoor furniture manufacturer has warranties like this. The key is the excellent quality of our wood and the extra-thick timber designs of all our pieces.

### Wood Grades and Decay Warranty:

- Douglas-fir: 10 years
- Mosaic Eco-Wood: 10 years
- Redwood: 15 years
- Mature Redwood: 20 years
- Old-Growth Redwood: 30 years

Forever Redwood stands behind its products. We are committed to quickly resolving any issues that might occur. For more information please see our [Warranty](#) page.

## VI. SHIPPING

### We offer 4 Shipping Options in the U.S.:

- Rush Shipping (ships in 3 weeks).
- Priority Shipping (ships in 6 weeks).
- Standard Shipping (ships in 10 weeks).
- Free Shipping in the Continental U.S. (ships in 14 weeks).

### Notes for Orders requiring drawings or approvals:

All Shade Structure orders (Pergolas, Pavilions, Gazebos and Arbors) require drawings to make sure all details are agreed upon prior to building and to give our customers the ability to customize their structures to meet their needs. We also sometimes make custom changes to Swings, Planters, Benches, Tables and other standard production items per customer requests. If your order has a custom detail or is a shade structure, you will receive your first drawings via email within 5 business days of receiving your completed order with a deposit.

We will go back and forth with you as needed to fine tune the design to your liking prior to building it. Once you sign off on your drawings, your timeline for shipping will begin. Please keep this in mind. If you need a Rush Order and also drawings, it is best you call in your order so that we can organize ourselves to both complete your drawings on an expedited basis and meet your shipping deadline.

**Yes, you can have free shipping plus save 3% off your order!** We carefully hand build each Forever Redwood item. When you choose a longer ship out date, you give us more time to build. This lowers our cost and we pass the savings to you. If you choose the Wait & Save Shipping option and prefer we ship out on a specific date (up to 6 months in advance), just enter the date in the Comment Box at Checkout. If no note is included, we'll ship in 3 months.

Orders ship from San Diego, CA. Add 3 to 6 business days transit time (depending on location). We ship to any country. Canada orders ship in 6 weeks. To see Canadian shipping costs, just add item to cart.

For orders outside the U.S. or Canada, just enter your country in the shipping information section at checkout or in the shopping cart to see your freight cost. We ship outside the U.S. or Canada in 6 weeks. For all international shipments, the shipping companies handle any customs paperwork and then contact you to arrange delivery.

**Assembly Service Available Nationwide:** All orders over \$3,000. in size can choose to have Forever Redwood assemble for you. Just choose White Glove Service in the Shopping Cart or at Checkout. For more information on White Glove, please go to: [WHITE GLOVE](#).



If your artistically inclined, the crating makes a great canvas to:  
**Lion of the Tribe of Juda by Patricia Vallejo**



Some of the ugly guys from our install crew that will scare your children when they come install your order!