



# FOREVER REDWOOD

*From the Forest, For the Forest since 1995*

---

866.332.2403 (TOLL FREE); 7am – 7pm Pacific Time, Monday-Saturday

## SKYLINE SANCTUARY PAGODA



# CONTENT

I. DESCRIPTION .....	2
II. SPECIFICATIONS .....	3
A. Dimensions & Drawings (Provided prior to construction) .....	3
III. ASSEMBLY & CARE .....	6
IV. MATERIALS .....	7
V. WARRANTY .....	7
VI. SHIPPING .....	8



## I. DESCRIPTION

The Skyline Sanctuary Pagoda is a luxury outdoor living structure crafted from the finest Redwood and designed with innovative engineering for durability and precision. With generous dimensions and stunning beauty, it offers the ultimate retreat for entertaining guests or relaxing in style. Choose the Skyline Sanctuary Pagoda for a long-lasting, high-quality addition to your backyard space.



- **Will Last Decades:** We use thick timber construction and extensive notching and other overbuilding details so you do not have to worry about harsh weather conditions like high wind, snow, heat, cold or humid climates. Each Penny is fully insulated with a vapor barrier and built with a Mature Redwood external skin for a 20 year decay warranty. The internal framing, flooring and walls are built in Douglas-Fir and Sugar Pine for a lighter colored aromatic finish.
- **Easy Design and Sizing:** You will receive via email detailed drawings within 5 business days of ordering. The drawings allow you to easily see what will work and what needs adjusting. We encourage you to take your time with the drawings and add the final appliances you plan to use so you can be sure they will fit and work as planned. While we don't ship appliances or assist with them, you want to be sure your home has been designed completely, appliances and all before giving us the green light to build. Many details can be adjusted including the roof pitch, window sizing, etc. and you can add custom details as well.
- **You Install or We Install?:** Each tiny home is fully erected in the shop for easy re-assembly. No drilling, sanding or cutting needed. Just bolt the pieces back together. The typical Tiny Home is a 2 week reassembly and will require a concrete pad or other foundation be built ahead of time. If you are not interested in putting up the home, [let us know](#). We can send a team anywhere in the U.S. to install for you.
- **Roofing:** An asphalt shingle roof or a metal roof is recommended to maximize weather resistance and longevity. Tile roofs can be accommodated, but require beefing up the structure further to handle the significant extra weight.

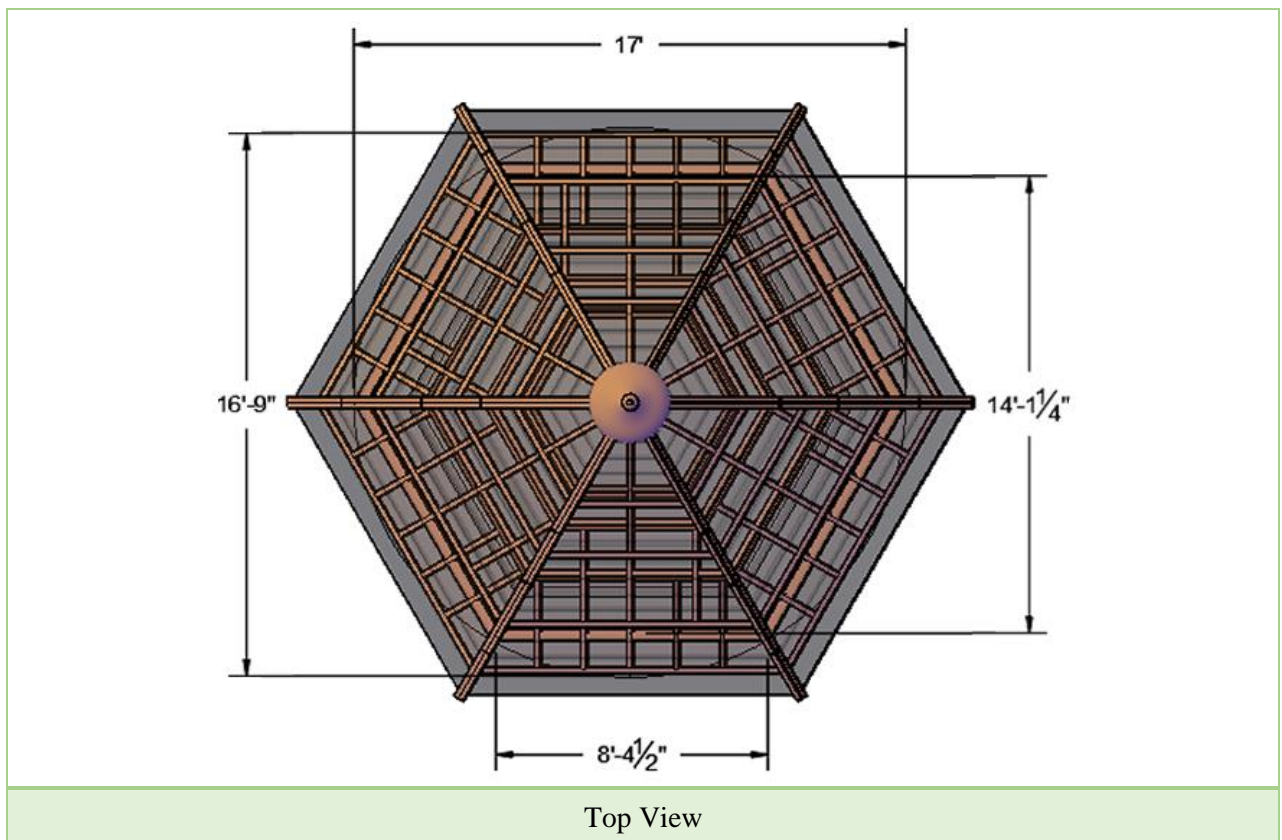
- **Questions?:** [Download](#) the ebook "Everything you Wanted to Know about Pergolas & Pavilions" for answers to frequently asked questions or please contact our [Pavilion Advisor](#).

[Contact us](#) to find out how to get started, and how we can help from design to putting it together at your house!

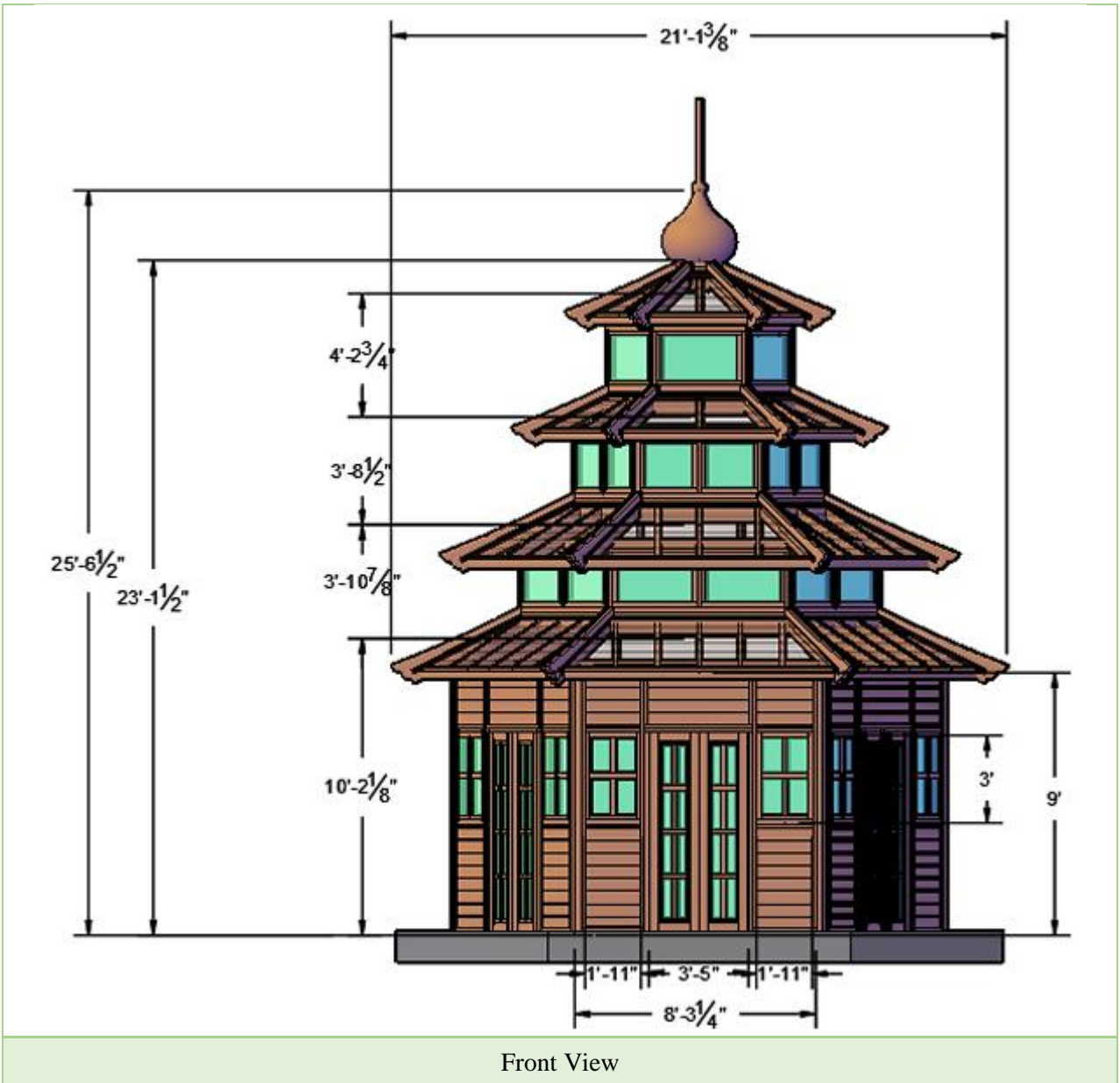
## II. SPECIFICATIONS

### A. Dimensions & Drawings (Provided prior to construction)

The Skyline Sanctuary Pagoda maximizes the interior space, surrounded by a cool exterior. Simple, functional and beautiful. The high quality and interior design adds the comfort that everybody is looking for.









Isometric View

### III. ASSEMBLY & CARE

#### All You Need is a Few Tools and a Friend.

Assembly is best done by two people and usually takes about half a day to a day, depending on size. Pergolas need a ratchet wrench, a hammer and a ladder to put them together. In some cases, you might need a drill to attach the posts into concrete. As with all our products, we preassemble pergolas in our shop to ensure everything fits together. All hardware is included and all parts are clearly labeled before it is shipped. We also include detailed step-by-step instructions.

Take a look at our assembly instructions below for specific details. If you plan to pour concrete to hold the posts, the project will require an additional half day prior to assembly. Please do the concrete pour a few days prior to assembly to allow the concrete to cure.

#### Installation Help.

Special talent is not required to re-assemble our pergolas. But, if you would like help, [just let us know](#). We have our own team for installations in California, Nevada and Southern Arizona and a network of local contractors we recommend for farther afield.

**Care:** Your Forever Redwood Furniture will last for decades in year-round weather without maintenance.

Depending on the wood grade you choose, you should expect your furniture to last 10-40 years without maintenance, even in climates with harsh year-round conditions.

Being outside year-round is rough on any woods finish. The surface absorbs UV rays, pollution, constant variations in moisture and temperature and it also oxidizes. This is why most wood just doesn't hold up and the surface color slowly changes towards a silver patina over the years. But, with Forever Redwood, you don't have to worry. The silver patina is surface deep only (less than 1/64") and is not indicative of decay. Your set will last decades and is not compromised in any way by the surface color change. For example, we keep our display items as is without refinishing to show off this natural aging (we like the patina!).

Although Forever Redwood is maintenance-free, we recommended you take a few minutes as needed to clean by either hosing down and/or brushing/dusting away accumulated debris (no soap or chemicals needed). If you'd like to keep your set looking its best for decades, please go to: [Care and Finish](#).

## IV. MATERIALS

Our secret to making furniture and shade structures with unmatched outdoor longevity begins and ends with our wood: we use generous amounts of the most decay resistant wood available.

To keep your Forever Redwood product looking its best, we only use stainless steel hardware and the highest quality stains and sealants.

Our Primary Customer is and always has been the homeowner who appreciates the kind of quality that will last decades.

Our products are regularly purchased by organizations that appreciate longevity: the U.S. Forest Service, U.S. military installations, State and City parks, Golf Clubs and Hotels to name a few.

We are favored by many landscape architects and contractors because they can count on exceptional quality and quick personal service to complete projects.

Before shipping, each item is built by hand and constructed in the shop to ensure that your order is finely finished and carefully inspected. Old-fashioned hand building allows us to customize each and every item to perfectly fit your needs.

Because we are a Regenerative Forestry Company and carefully manage our own forests, you have a choice between 6 Wood Grades with extended warranties against decay.

## V. WARRANTY

**Every Forever Redwood product comes with a warranty against decay.** The length of the warranty depends on the wood grade you select. **No other outdoor furniture manufacturer offers decade long warranties like we do!** The key to our success is in the wood: its excellent quality combined with extra-thick timber.

We have 6 Wood Grades. Below are listed each Wood Grade and its Decay Warranty:

- **Old-Growth Redwood-- 30 years**
- **Mature Redwood-- 20 years**
- **California Redwood-- 15 years**
- **Mosaic Redwood-- 12 years**



- **Douglas-fir-- 10 years**
- **Mosaic Douglas-fir-- 10 years**

Here at Forever Redwood we stand behind our products. We are committed to quickly resolving any issues that might occur. For more information please visit our [Warranty](#) page.

## VI. SHIPPING



### SHIPPING OPTIONS FOR HANDCRAFTED REDWOOD FURNITURE

- **Rush Shipping** (ships in 3 weeks).
- **Priority Shipping** (ships in 6 weeks).
- **Standard Shipping** (ships in 9 weeks)
- **Discounted Shipping** (ships in 12 weeks)
- **Free Shipping in the Continental U.S.** (ships in 15 weeks)
- **Pre-Order & Save Shipping (3% discount) in the Continental U.S.** ships in 18 weeks

#### Notes for Orders requiring drawings or approvals:

All Shade Structure orders (Pergolas, Pavilions, Gazebos and Arbors) require drawings to make sure all details are agreed upon prior to building and to give our customers the ability to customize their structures to meet their needs. We also sometimes make custom changes to Swings, Planters, Benches, Tables, and other standard production items per customer requests. If your order has a custom detail or is a shade structure, you will receive your first drawings via email within 5 business days of receiving your completed order with a deposit.

We will go back and forth with you as needed to fine tune the design to your liking prior to building it. Once you sign off on your drawings, your timeline for shipping will begin. Please keep this in mind. If you need a Rush Order and drawings, it is best you call in your order so that we can organize ourselves to both complete your drawings on an expedited basis and meet your shipping deadline.

We ship usually once every 3 to 4 days as soon as we can completely load a tractor trailer like this



**We ship to any country. Orders to Canada and most other countries ship out in 10 weeks.**

To see shipping costs, add an item to your cart. **For orders outside the U.S. or Canada**, enter your country in the shipping information section at checkout and the cost will be calculated. For international shipments, the shipping company will handle customs paperwork. They will contact you to arrange delivery once your order clears customs.

**U.S. Assembly Service Available Nationwide:** All orders over \$3,000 in size can choose to have Forever Redwood assemble for you. Choose White Glove Service in the Shopping Cart or at Checkout. For more information on White Glove, please go to: **WHITE GLOVE COMPLETE ASSEMBLY SERVICE**

If you have specific questions about shipping or drawings, please don't hesitate to contact us.



Our trucks loaded and ready to deliver to you!

**Forever Redwood uses 100% recycled wood and cardboard in all packaging.** We use our shop scraps to build crate panels (see photos below). Please help by reusing or disposing of these items responsibly.

Small items ship via FedEx Ground. Large orders up to 16' in length ship in crates delivered to your driveway by nationwide Common Carriers. Padded boxes inside the crate weigh less than 90 lbs for easy handling. Extra-large orders are delivered by our own 28' box trucks or by dedicated tractor trailers.



**California deliveries have 8.25% Sales Tax added.** Most Canadian provinces require GST and/or PST taxes be paid prior to delivery.





Each order is affixed with a small 4 inch wide anodized aluminum plaque. Each plaque has a unique serial number and our contact information so your or anybody else can always find us 20 years time! Thank you. If you are artistically inclined, the crates make great canvases...



Judah's Tribe Lion by Patricia Vallejo