



# FOREVER REDWOOD

*From the Forest, For the Forest since 1995*

---

866.332.2403 (TOLL FREE); 7am – 7pm Pacific Time, Monday-Saturday

## THE PALO ALTO CABIN



## CONTENT

I. DESCRIPTION .....	2
II. SPECIFICATIONS .....	2
A. Dimensions, Drawings, Design & Specifications .....	2
B. Palo Alto Cabin Porch.....	5
C. Palo Alto Cabin Flooring or Decking.....	8
D. Palo Alto Cabin Skylight.....	11
E. Roofing Options .....	16
F. Fascia Board for Gutters.....	18
G. Electrical Wiring Trim .....	18
H. Accessory Bases & Shelving.....	19
I. Finish Options .....	20
III. ASSEMBLY & CARE.....	23
IV. MATERIALS .....	24
V. WARRANTY .....	25
VI. SHIPPING .....	25

## **I. DESCRIPTION**

The Palo Alto Cabin was born from a conversation with a gazebo customer. He loved his gazebo and wanted to add a real, fully insulated cabin with double paned windows and an operable skylight and a wraparound deck. The Palo Alto is a build-to-order beauty, tell us about your cabin day dreams and we'll come up with a plan. Yes, any size. Yes, any detail...

- The Palo Alto Cabin is available in standard sizes from 10' x 10' to 24' x 20'. We can build larger than 24' and custom sizing is also available.
- The Cabin is fully erected in the shop for easy re-assembly. No drilling, sanding or cutting needed. Ships in finished panels that bolt together.
- Detailed Drawings are emailed within 5 business days. You can change any detail or dimension to ensure your Cabin is built exactly the way you want.
- You can choose from our standard sizes and options, and if you don't see a size or detail you'd like, let us know.
- You can add partitions for a bedroom/bathroom or a kitchenette. We encourage you to design all appliances and fixtures into your final drawings. This way, your cabin will be ready to add electrical and plumbing after installation is completed. Electrical and plumbing is best by local licensed plumbers and electricians.
- You can add as many double paned windows as you like to the design. As long as you stick to standard sized and standard construction windows, pricing for your cabin doesn't change regardless of the amount and size of windows you add.
- Our cabins are guaranteed to last 15 years but with minimal maintenance will last decades. Each Palo Alto uses only a Redwood exterior. Redwood outlasts teak and cedar. We use oversized timbers, Stainless Steel hardware and the best weather resistant sealant.

## **II. SPECIFICATIONS**

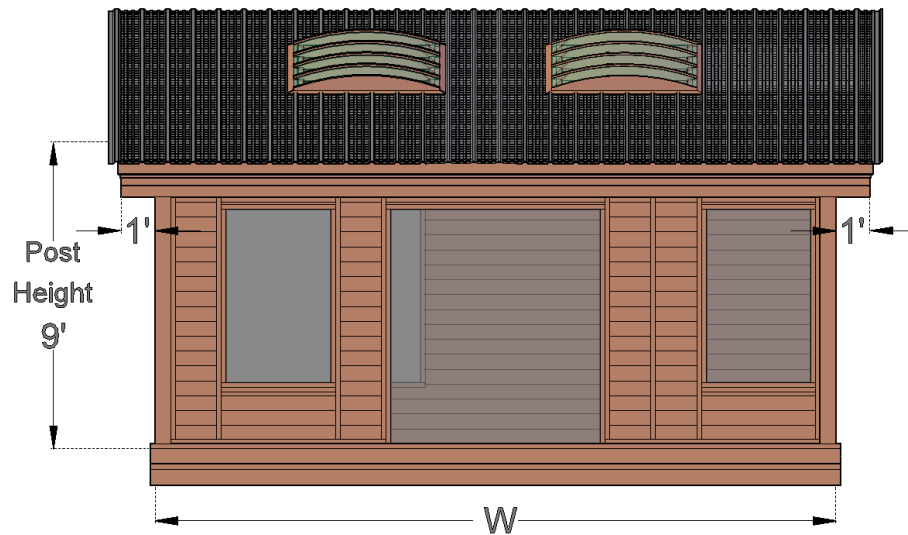
### **A. Dimensions, Drawings, Design & Specifications**

#### **DIMENSIONS & DRAWINGS (PROVIDED PRIOR TO CONSTRUCTION)**

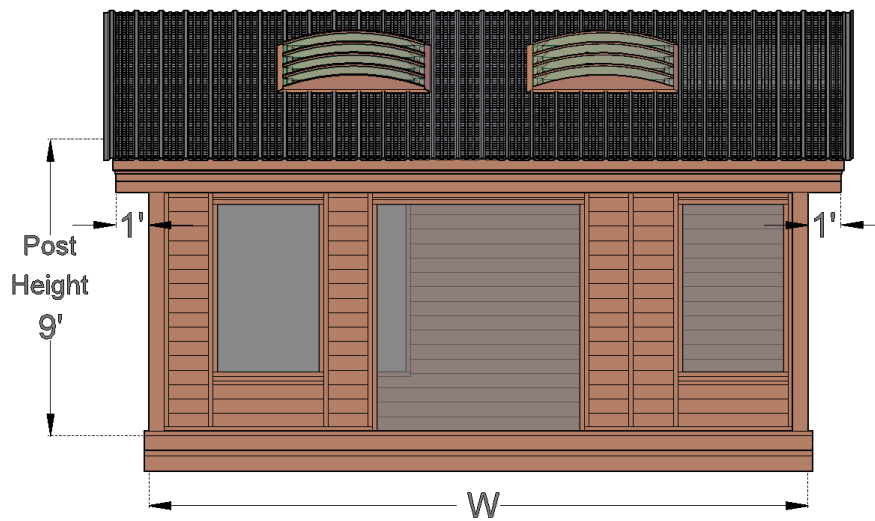
The Palo Alto Backyard Cabin is available from 10' to 20' Length and Width. The Length and Width are the overall wall measurements. The standard roof overhang beyond the walls is 12".



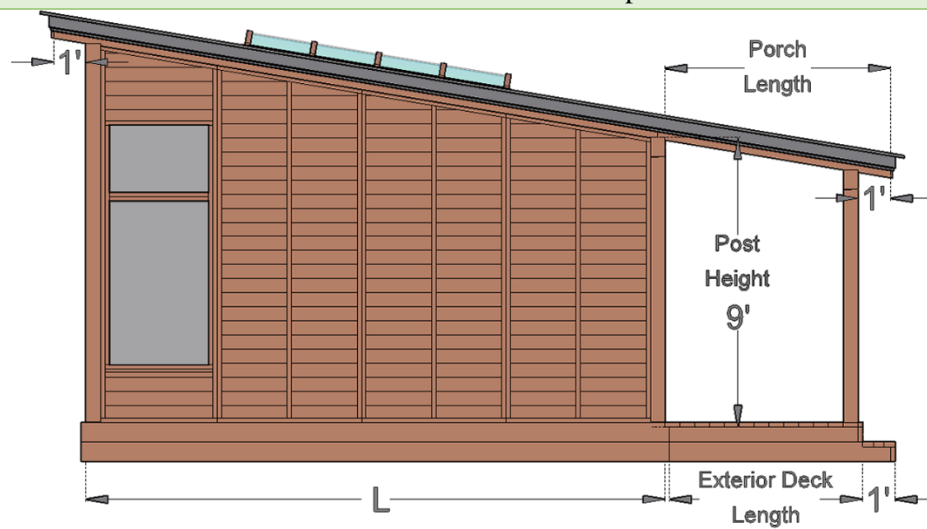
**Front View - Deck Option**



**Side View - Deck Option**



**Front View - Deck & Porch Option**

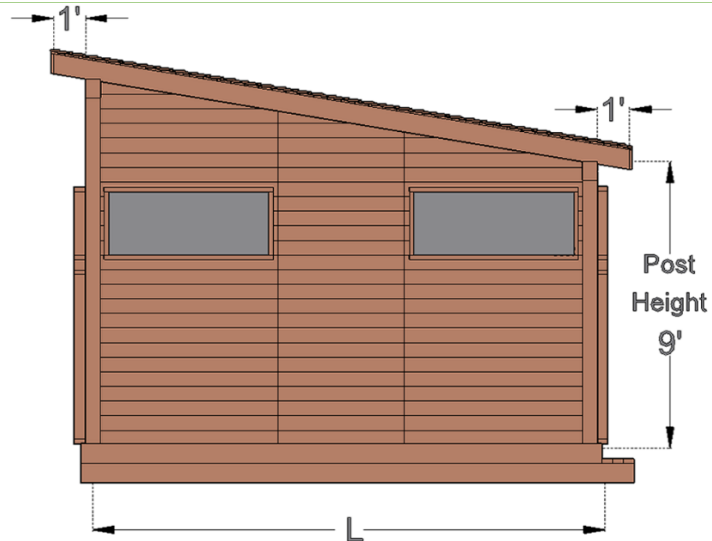


**Side View - Deck & Porch Option**

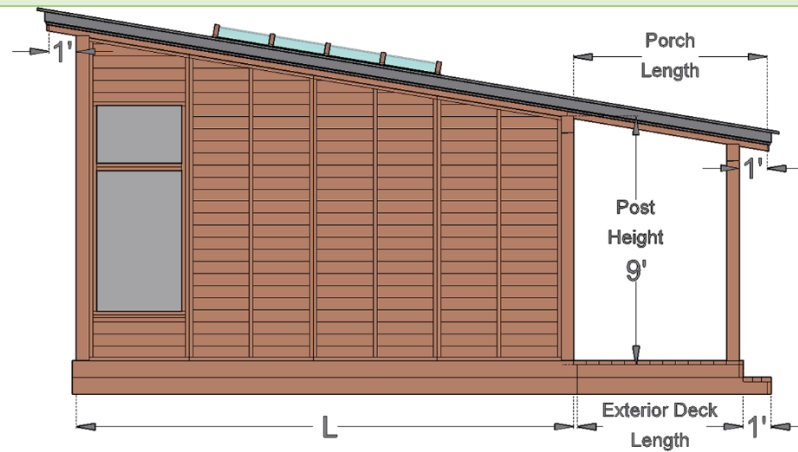
Post Measurements		
Length	Post Height (Front)	Tallest Post Height (Back)
14 ft	9 ft	11 ft
16 ft	9 ft	11-1/2 ft
18 ft	9 ft	12 ft
20 ft	9 ft	12.5 ft



## B. Palo Alto Cabin Porch



**The Palo Alto Backyard Cabin – Side View/Without Porch**



**The Palo Alto Backyard Cabin – Side View/Without Porch**

- You can choose buy your Palo Alto with:
- Without Porch
- With 5ft Porch
- With 7ft Porch



**The Palo Alto Backyard Cabin – Without Porch and Deck**



**The Palo Alto Backyard Cabin – Without Porch/ With Deck**





**The Palo Alto Backyard Cabin – With Porch/No Deck**



**The Palo Alto Backyard Cabin – With Porch and Deck**

Note: Be careful when you choose your desired dimensions, the Porch dimensions will be added to the Palo Alto.



## C. Palo Alto Cabin Flooring or Decking

### Interior Flooring or Decking

You can order your Cabin without a flooring or add a tongue and groove Douglas-fir flooring. The Cabin are usually placed on a concrete pad or a wood deck. We recommend placing your Cabin on a wood deck, concrete slab or a stone or tile or brick patio to elevate the walls off the ground for more year round use.



**Interior Flooring/Exterior Deck**



**Interior Decking** – (2x6 boards with 1/32” separation between the boards)



**Without Exterior Decking** - (Interior can be with a Deck or flooring)



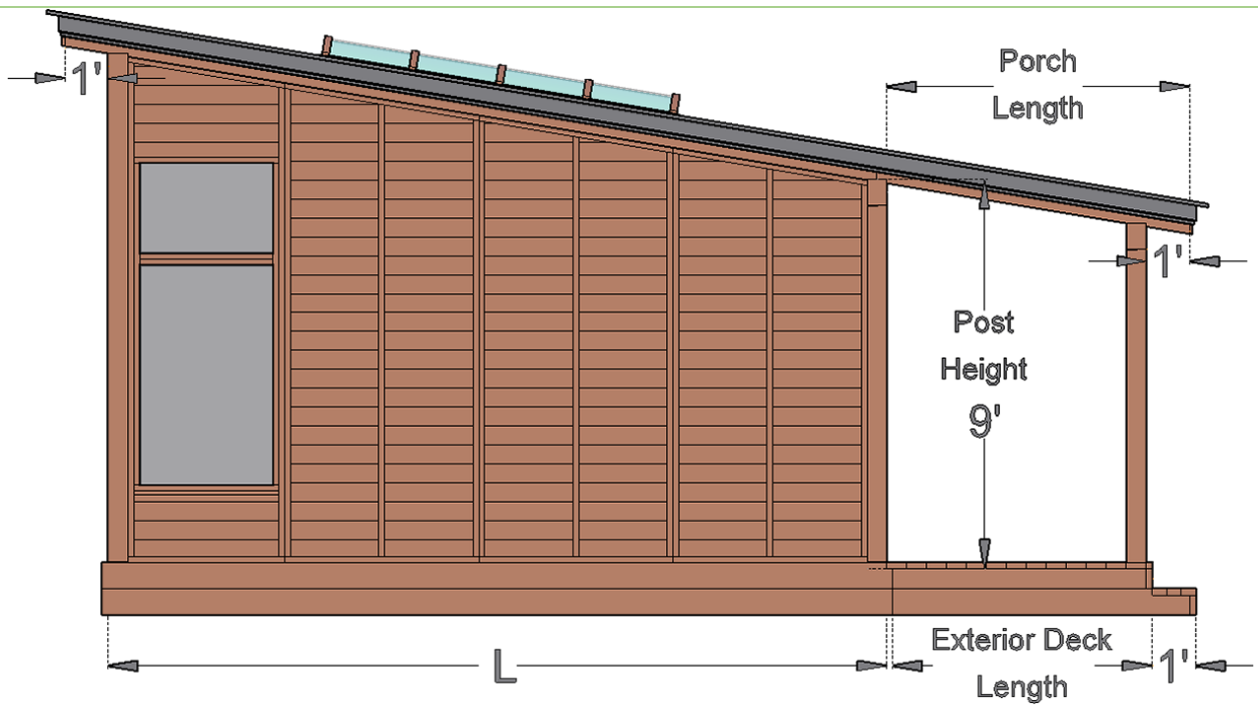


**With Exterior Deck** - (The Exterior Deck can be of 4ft or 6ft extra size of the Cabin and Interior need be a Deck floor)



**With Exterior Decking and Porch** - (The Exterior Deck can be of 4ft or 6ft extra size of the Cabin and Interior need be a Deck floor)





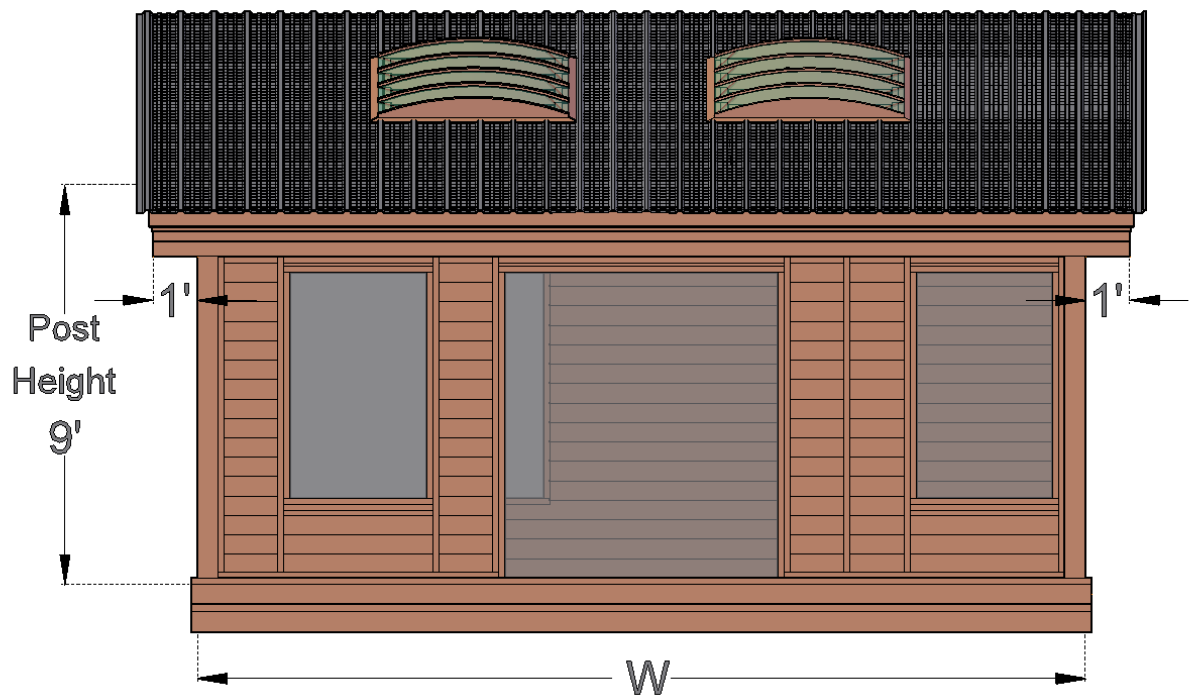
The Cabin Length (L) does not include the exterior deck, be careful when choosing your Palo Alto Length size in the calculator options. The exterior deck adds an independent measurement to the length of your Cabin. You can choose between 4 or 6 feet.

#### D. Palo Alto Cabin Skylight



**Front View - Without Skylight.** You can choose up to 2 Skylights





**Front View - With 2 Skylight**



**Without Skylight**





**With a Skylight**

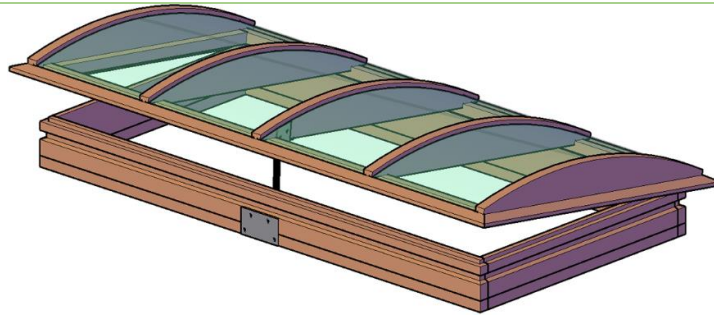


**With two Skylights**

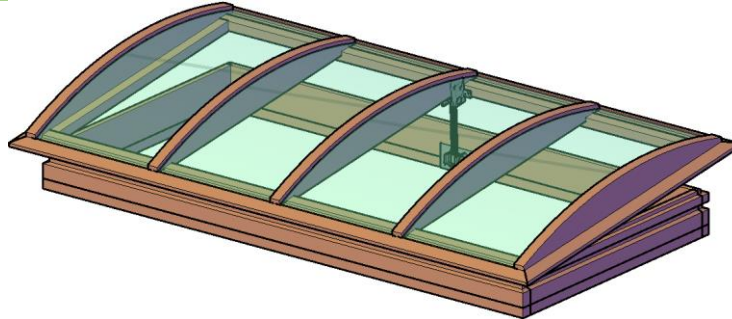
#### Skylight Mechanism:

Skylight opens for ventilation. Like the windows, you have the choice of bronze-tinted semi-transparent acrylic, solid white acrylic, or clear acrylic.

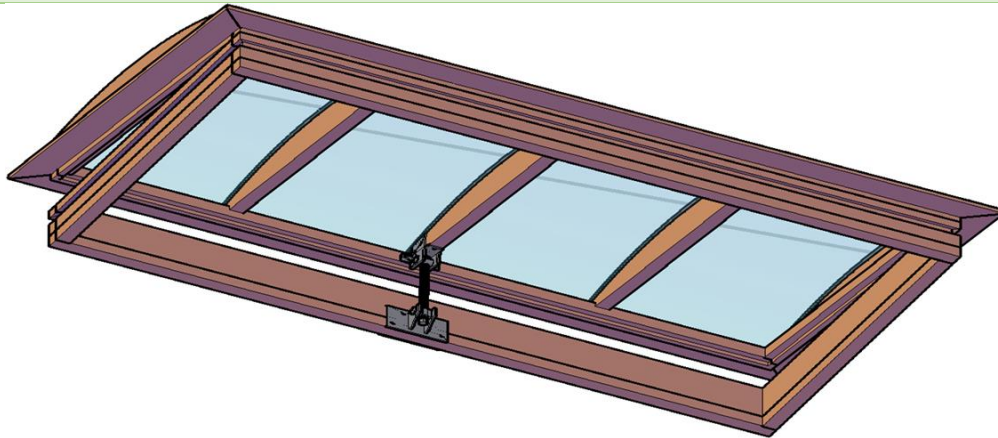




**Skylight Mechanism: Side View 1**

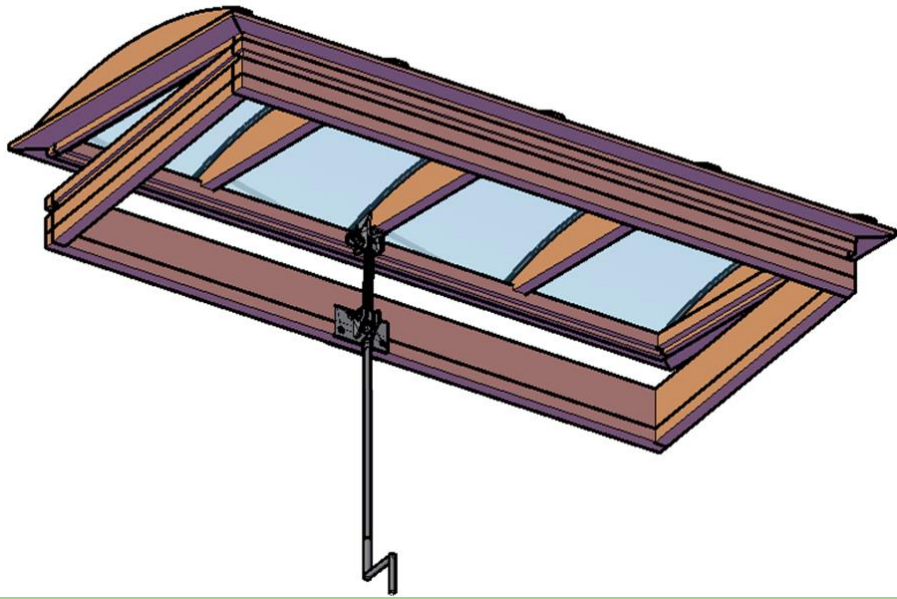


**Skylight Mechanism: Side View 2**

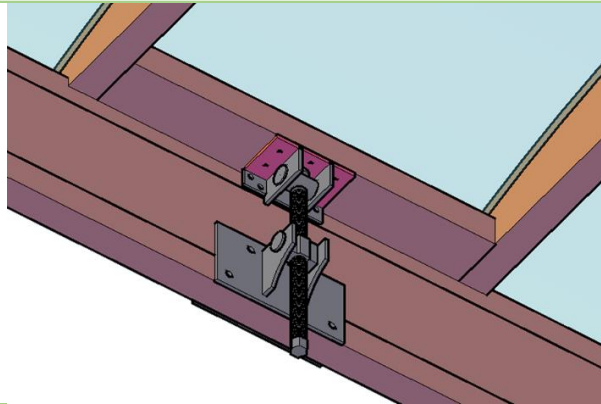


**Skylight Mechanism: Interior View 1.0**

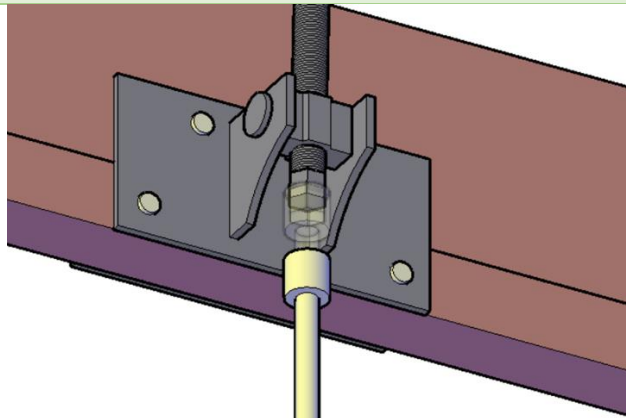




**Skylight Mechanism: Interior View 2.0**



**Skylight Mechanism: Detail 1.0**



**Skylight Mechanism: Detail 2.0**



## E. Roofing Options

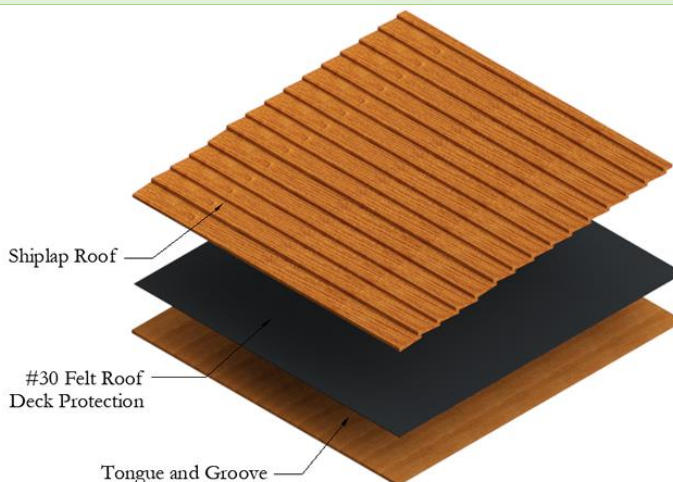
You can finish your Structure with at least 4 different roofing options.

All roofing options have an internal tongue and groove ceiling, then roofing paper above it to ensure it is waterproof and then the final roofing above it. The roofs are extra strong, can be walked on as needed and are rated to 100 lbs/psf minimum.

The most popular options are Shiplap, Wood Shingles, Asphalt Shingles or Metal. Your final roofing choice will be fine tuned during the design phase of your order in terms of color and the final product. Final roofing materials costs of up to \$3.50 psf are included with your order. If you wish to go with a premium priced product, we will calculate the cost above this threshold during design and let you know what the upcharge will be.



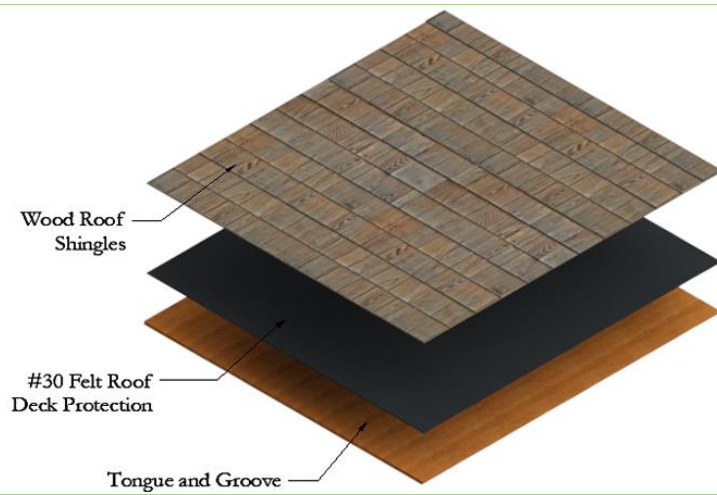
**Shiplap Roof**



**Shiplap Roof Specifications**



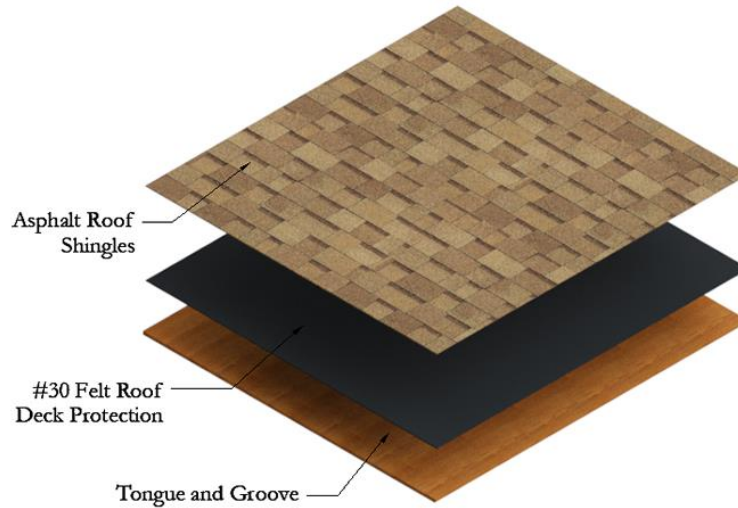
**Wood Shingles**



### Wood Shingles Specifications



### Asphalt Shingles

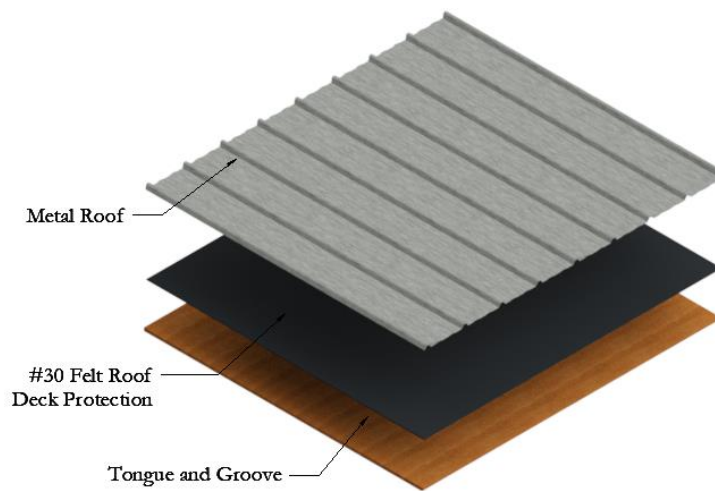


### Asphalt Shingles Specifications



### Metal Roof





### Metal Roof Specifications

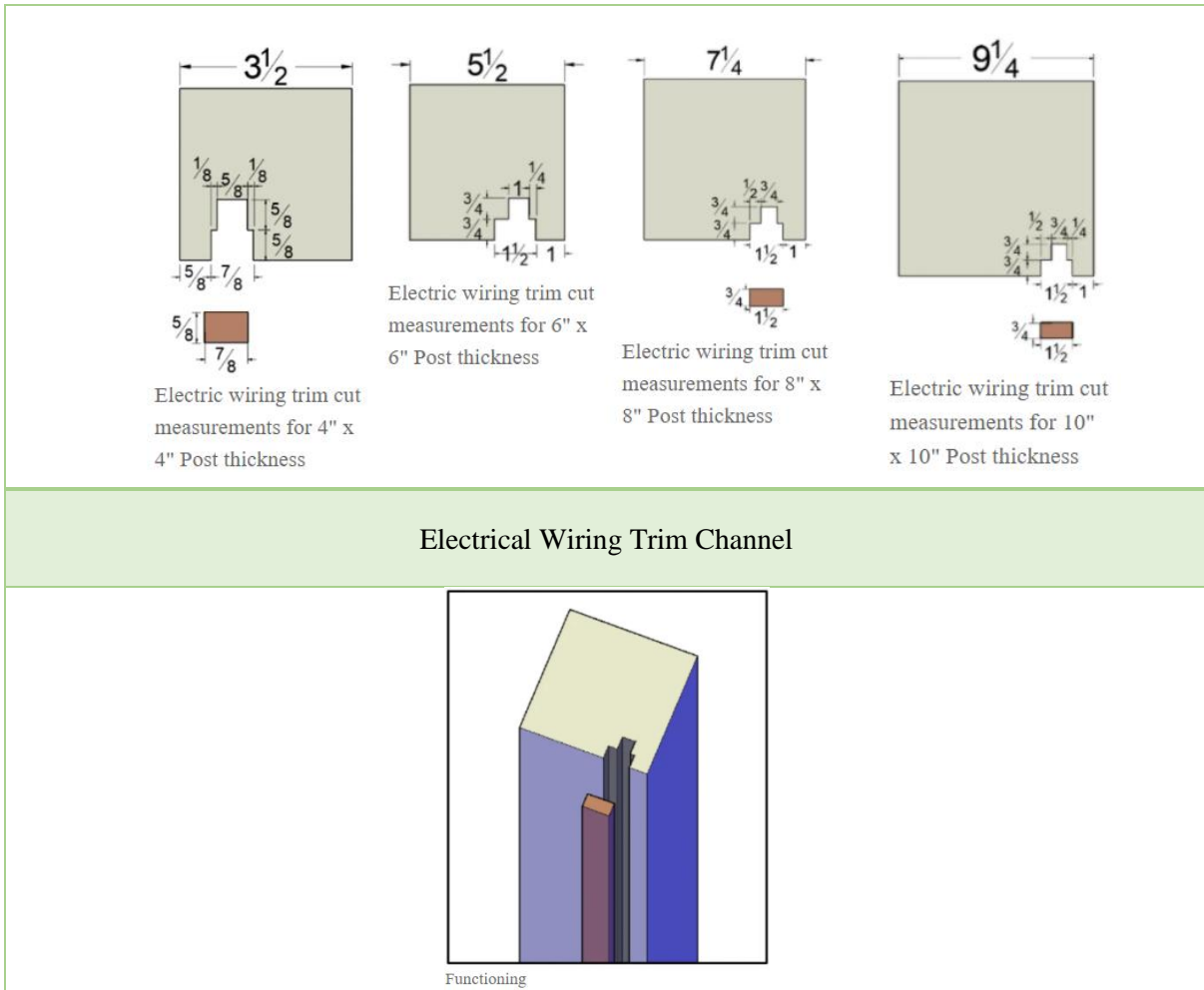
## F. Fascia Board for Gutters

You can close in the edges of your pavilion roof by adding matching Fascia boards that are the same thickness as your rafters. Fascia boards also are useful if you are planning to add gutters to your pavilion.

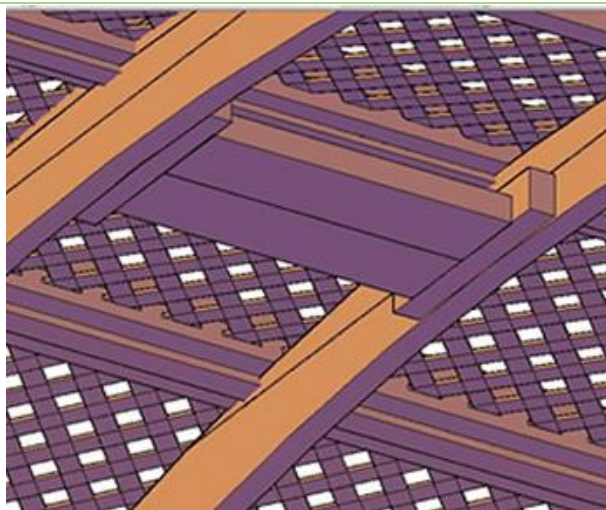
## G. Electrical Wiring Trim

If you plan to run wiring to add lights or a fan or two to your Structure, we can add a cutout to your timbers and add a trim piece that will hide the electrical wiring beneath it. The trim is centered on the interior side of the Post and or is added to Roof Supports. It is attached with finish nails for a smooth finish.

If you only want to add it to just one or two posts, please let us know in the Comment box which posts you'd like them on. They will be included in your Structure drawings that will be emailed to you within 5 business days of receiving your product order. At that point, you can make any adjustments in case the trim was place on the wrong post or posts.



## H. Accessory Bases & Shelving



Ceiling Fan Base Drawing



Ceiling Fan Base



Attach the Ceiling Fan base between the rafters with 4 bolts (two per side). The paddle fan is usually placed in the center of the Pergola's ceiling, but of course, you can place it almost anywhere you have sufficient head space.

Many customers have told us that by far the best manufacturer is a company out of Kentucky called the **Big Ass Fan** Company. Funny name, great fans. They move a lot of air, are quiet and are probably the best in the business.

## I. **Finish Options**

All our furniture ships finely sanded to 220 grit for a smooth to the touch finish.

The most popular finish is our Transparent Premium Sealant. This sealant leaves your furniture looking natural and helps keep the beautiful wood surface colors from fading for several years. We use Sikkens brand finishes because they are the best finishes on the market. For more information about our finishes and how to keep your furniture looking great year after year, please go to: [Care & Finish.](#)

**Unfinished (fine sanding only):**



If you are applying your own stain or want the surface color to fade to a "weathered look" in a few months. We do not recommend you leave your furniture unfinished outdoors for any extended period regardless of wood quality. Outdoor weather changes constantly and it is best to at least seal the wood to protect it from consistently absorbing and losing moisture.

**Transparent Premium Sealant - Recommended for Outdoors:**

Below are the 5 grades of wood we offer with the Transparent Premium Sealant applied. The color tones shown are close representations of the color your furniture will look like. There is no extra charge for the Transparent Premium Sealant:

				
Douglas Fir (10 yr. Warranty)	Mosaic Eco-Wood (10 yr. Warranty)	Redwood (15 yr. Warranty)	Mature Redwood (20 yr. Warranty)	Old Growth Redwood (30 yr. Warranty)

We also offer the Transparent Premium Sealant with the following stains. There is a small charge for adding these stains because it increases the total amount of coats to 4 with the sealant as the final coats:

				
Transparent	Cherry Stain	Coffee Stain	Black Premium Stain	White Wash





Here is how the Coffee Stain looks like on Redwood



Here is how the Cherry Stain looks like on Redwood



Here is how the Black Premium Stain looks like on Redwood



Here is how the White Wash looks like on Redwood

## Tiger Stripe Effect

Douglas-Fir when stained dark creates a "tiger stripe" effect as shown in this photo. It is beautiful and most customers love it. If you are looking for a dark consistent stain and do not want to see a "tiger stripe effect", please go with any of the Redwood grades for a more consistent stain finish.



### Primers

- **Off-White Oil-Based Primer:** If you are painting a light color. We apply two coats so that it is ready for one final coat.
- **Gray Oil-Based Primer:** If you are painting a darker color. We apply two coats so that it is ready for the final coat.

## III. ASSEMBLY & CARE

Assembly Instructions for: [The Palo Alto Cabin](#)

Assembly Instructions for: [How to Anchor Your Pergola](#)

### All You Need is a Few Tools and a Friend.

Assembly is best done by two people and usually takes about half a day to a day, depending on size. Pergolas need a ratchet wrench, a hammer and a ladder to put them together. In some cases, you might need a drill to attach the posts into concrete. As with all our products, we preassemble pergolas in our shop to ensure everything fits together. All hardware is included and all parts are clearly labeled before it is shipped. We also include detailed step-by-step instructions.

Take a look at our assembly instructions below for specific details. If you plan to pour concrete to hold the posts, the project will require an additional half day prior to assembly. Please do the concrete pour a few days prior to assembly to allow the concrete to cure.

### Installation Help.



Special talent is not required to re-assemble our pergolas. But, if you would like help, [just let us know](#). We have our own team for installations in California, Nevada and Southern Arizona and a network of local contractors we recommend for farther afield.

**Care:** Your Forever Redwood Furniture will last for decades in year-round weather without maintenance.

Depending on the wood grade you choose, even with harsh year-round outdoor conditions, you can expect your furniture to last from ten to forty years without maintenance of any kind.

Being outside year-round is rough on any woods finish. The surface absorbs UV rays, pollution, constant variations in moisture and temperature and it also oxidizes. This is why most wood just doesn't hold up and the surface color slowly changes towards a silver patina over the years. But, with Forever Redwood, you don't have to worry. The silver patina is surface deep only (less than 1/64") and is not indicative of decay. Your set will last decades and is not compromised in any way by the surface color change. For example, we keep our display items as is without refinishing to show off this natural aging (we like the patina!).

Although Forever Redwood is maintenance-free, we recommended you take a few minutes as needed to clean by either hosing down and/or brushing/dusting away accumulated debris (no soap or chemicals needed). If you'd like to keep your set looking its best for decades, please go to: [Care and Finish](#).

## IV. MATERIALS

The secret to outdoor longevity begins and ends with the wood. We use generous amounts of the most decay resistant wood available. We encourage our customers to compare photos of our items side by side with any competing product. Thickness counts. Furniture that is thin and light simply won't last in the year round weather.

To keep your furniture beautiful, we use only stainless steel hardware and the highest quality stains and sealants. We use only the Sickens brand of sealants.

Our primary customer has always been the homeowner that appreciates spending a bit more for quality that will last decades.

Our products are installed with organizations that appreciate longevity like the U.S. Forest Service, U.S. military installations, State and City parks, golf clubs and hotels.

We are favored by many landscape architects and contractors because they can count on exceptional quality and quick personal service to complete projects.

We build each item by hand. This insures your set is finely finished and carefully inspected. Old-fashioned hand building also allows us to adjust the size or design of any item to fit your needs.

Because we are a forestry company, we can offer 5 exceptional wood grades to choose from our carefully managed forests with warranties of up to 30 years against decay in any weather. [Click for more about our 5 wood grades.](#)

## V. WARRANTY

Wood decay is warrantied up to 30 years depending on the wood grade. No other outdoor furniture manufacturer has warranties like this. The key is the excellent quality of our wood and the extra-thick timber designs of all our pieces.

### Wood Grades and Decay Warranty:

- Douglas-fir: 10 years
- Mosaic Eco-Wood: 10 years
- Redwood: 15 years
- Mature Redwood: 20 years
- Old-Growth Redwood: 30 years

Forever Redwood stands behind its products. We are committed to quickly resolving any issues that might occur. For more information please see our [Warranty](#) page.

## VI. SHIPPING

### We offer 4 Shipping Options in the U.S.:

- Rush Shipping (ships in 3 weeks).
- Priority Shipping (ships in 6 weeks).
- Standard Shipping (ships in 10 weeks).
- Free Shipping in the Continental U.S. (ships in 14 weeks).

### Notes for Orders requiring drawings or approvals:

All Shade Structure orders (Pergolas, Pavilions, Gazebos and Arbors) require drawings to make sure all details are agreed upon prior to building and to give our customers the ability to customize their structures to meet their needs. We also sometimes make custom changes to Swings, Planters, Benches, Tables and other standard production items per customer requests. If your order has a custom detail or is a shade structure, you will receive your first drawings via email within 5 business days of receiving your completed order with a deposit.

We will go back and forth with you as needed to fine tune the design to your liking prior to building it. Once you sign off on your drawings, your timeline for shipping will begin. Please keep this in mind. If you need a Rush Order and also drawings, it is best you call in your order so that we can organize ourselves to both complete your drawings on an expedited basis and meet your shipping deadline.



**Yes, you can have free shipping plus save 3% off your order!** We carefully hand build each Forever Redwood item. When you choose a longer ship out date, you give us more time to build. This lowers our cost and we pass the savings to you. If you choose the Wait & Save Shipping option and prefer we ship out on a specific date (up to 6 months in advance), just enter the date in the Comment Box at Checkout. If no note is included, we'll ship in 3 months.

Orders ship from San Diego, CA. Add 3 to 6 business days transit time (depending on location). We ship to any country. Canada orders ship in 6 weeks. To see Canadian shipping costs, just add item to cart.

For orders outside the U.S. or Canada, just enter your country in the shipping information section at checkout or in the shopping cart to see your freight cost. We ship outside the U.S. or Canada in 6 weeks. For all international shipments, the shipping companies handle any customs paperwork and then contact you to arrange delivery.

**Assembly Service Available Nationwide:** All orders over \$3,000. in size can choose to have Forever Redwood assemble for you. Just choose White Glove Service in the Shopping Cart or at Checkout. For more information on White Glove, please go to: [WHITE GLOVE.](#)



If your artistically inclined, the crating makes a great canvas to:  
**Lion of the Tribe of Juda by Patricia Vallejo**



Some of the ugly guys from our install crew that will scare your children when they come install your order!